



Protection Done Right





Contents

- 06 Information
- 10 BSX® Xtreme Welding Gear
- 15 AngelFire® Women's Welding Gear
- 16 Stick Welding Gloves
- 19 Welding Backpads
- 24 MIG Welding Gloves
- 26 TIG Welding Gloves
- 28 Leather Welding Apparel
- 32 Hybrid™ Welding Apparel
- 34 Flame Resistant Apparel
- 40 Gear Bags
- 41 Accessories
- 42 Balaclava Sock Hoods & Headwear
- 44 Mechanic's Gloves
- 48 Driver's Gloves
- 51 Leather Palm Gloves
- 54 Winter Insulated Gloves
- 57 Winter Liners
- 58 Coated Gloves
- 61 Cut Resistant Protection
- 62 Hot Mill, Jersey, & Knit Gloves
- 64 Arc Flash Protection
- 66 Oil/Gas, Flash Fire Protection
- 67 Mining Protection
- 68 Hi-Vis Protection & Safety Vests
- 71 High Temperature Products
- 74 Welding Screens & Frames
- 77 Welding Blankets
- 80 Made in U.S.A. Products
- 82 Distributor Support

In 1974, Revco sought to bring a whole new level of personal protection to industrial markets. That gave birth to the Black Stallion® brand which represented our principles of Quality, Service, and Innovation. Just as important as the products was our desire to work closely with distributors who shared in our values of hard work and dedication. We took those ideals to heart and turned them into a sound business strategy. Today we have earned a track record of success, along with a nationwide network of distributors who believe in the power of mutual partnership. With the introduction of the innovative BSX® line and AngelFire® women's line, Revco is more committed than ever to working together to raise the bar in industrial protection.

One thing still remains the same—we will continue to embrace those principles which have served us and our customers so well in the past. With pride in our tradition of great service, Revco will always be committed to your success. Regardless of the business climate, we will strive for real value and true quality even at times when others are most tempted to cut corners. As leading experts in our industry, we will harness our passion to innovate new products and help convert that into energizing your sales and creating practical solutions for your customers. Above all, Revco will seek to always stay ahead of global changes to earn your business as the trusted source for gloves and protective wear well into the future.



**OUR
MISSION
IS TO BRING
GREAT
PRODUCTS
OF VALUE**

to the markets we serve.

We strive to grow
with our distributors and suppliers
by focusing on customer-driven goals
that include: outstanding service,
consistent quality, leading innovation,
marketing excellence, true value,
and honest dealings.





Quality

Consistent quality is a reality at Revco. We focus on collaborating directly with long-term global partners to ensure our Black Stallion® and BSX® products represent excellence.

Service

Service is more than shipping orders quickly. At Revco, it has always been about your trust. We will earn your business by creating real value and delivering practical solutions.

Innovation

Innovation is taken seriously here. Revco's passion for pushing the envelope and following bold new directions is part of our company vision. Make it your competitive advantage.

Acknowledgments

The Revco, Black Stallion, BSX and AngelFire names and logos are registered trademarks of Revco Industries, Inc. Facebook is a registered trademark of Facebook, Inc. Kevlar, Nomex, and Teflon are registered trademarks of E. I. du Pont de Nemours and Company. Lexan is a registered trademark for SABIC Innovative Plastics. PBI is a registered trademark of PBI Performance Products, Inc. TenCate and Tecasafe are registered trademarks of Koninklijke Ten Cate nv and/or its subsidiaries. Thinsulate is a registered trademark of Minnesota Mining and Manufacturing Company. Verilon is a registered trademark of Continental Plastic Company. Vertex is a registered trademark of Amatec Corporation. Atlas is a trademark of Showa Co. AccuFlex, Alpha TIG, Arcster, ArmorFlex, BackPatch, BlackForge, BumpPatch, CableNotch, CushionCore, DragPatch, DURALite, FlexHand, FuzzyHand, FuzzyHand MAX2, FuzzyHead, HalfBack, Handy Handz, Heat-Standoffs, HelmetCatch, Hybrid, KnuckleFlex, Mighty MIG, MultiBlend, NoGap, QuickFrame, RestPatch, SafSleevez, Saf-Vu, SuperCharged, Tigster, ToolHandz, and Welding America Together are trademarks of Revco Industries, Inc.



Disclaimer

Revco gloves, apparel, accessories, screens, blankets, and all other products are warranted against defects in the manufacturing process only. As applications do vary, no use warranty is implied or intended. Working temperatures and recommended applications are presented without guarantee or responsibility on Revco's part. Information given in this catalog is intended as a guideline only. A careful analysis should be made before selecting protective equipment for each particular work environment and circumstance. It is the buyer's and, ultimately, the user's responsibility to determine if our products will provide adequate protection. As testing and modifications are ongoing in the industry, Revco reserves the right to change information and recommendations as further knowledge is gained.

The contents of this catalog are intended for authorized Revco distributors. Information in this catalog is subject to change without notice. Some products are not standard stock items and may require additional lead time—please refer to the current price book. Contact Revco for the latest updates and information.



BSX® and Black Stallion® are on Facebook. Like us today!

06: Information

Symbols



New product



Popular product



Innovative product



Women's product



Max number of washes for FR garments



Product has Kevlar® stitching



Product has waterproof inner barrier



Welding glove sold as left hand only



Arc rated for arc flash protection under NFPA 70E; see HRC and ATPV



Hazard risk category assignment under NFPA 70E, based off of the ATPV figure



Arc thermal performance value in cal/cm² under NFPA 70E, helps determine HRC



Complies with flash fire protection under NFPA 2112, as common in oil and gas



Pending NFPA 2112 testing and approval

Shipping From

Convenient shipping from our: WDC (Western Distribution Center) in the L.A. area, and EDC (Eastern Distribution Center) in the Memphis area



Glove Sizing

Measure around your hand above the V of the thumb. This gives you the circumference in inches. Compare it to the measurement table below to find your corresponding glove size.

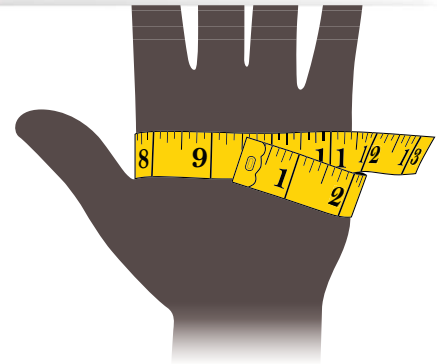
Men's Gloves

Size	XS	S	M	L	XL	2XL
Men's	7"-8"	8"-9"	9"-10"	10"-11"	11"-12"	12"-13"

Women's Gloves

Size	XS	S	M	L	XL	2XL
Women's	7"-7¼"	7¼"-7½"	7½"-7¾"	7¾"-8"	8"-8¼"	-

To accommodate extra long fingers and/or fingernails, please consider choosing one size up.



Apparel Sizing

Find Your Jacket Size

Take the chest measurement by measuring under the armpits around the fullest part of the chest. Find your jacket/coat size in the table below.

Men's Jackets (updated)

Size	S	M	L	XL	2XL	3XL	4XL	5XL
Chest	33"-37"	37"-41"	41"-45"	45"-49"	49"-53"	53"-57"	57"-61"	61"-65"
Sleeve	33"	34"	34"	36"	36"	37"	37"	38"

Women's Jackets (updated)

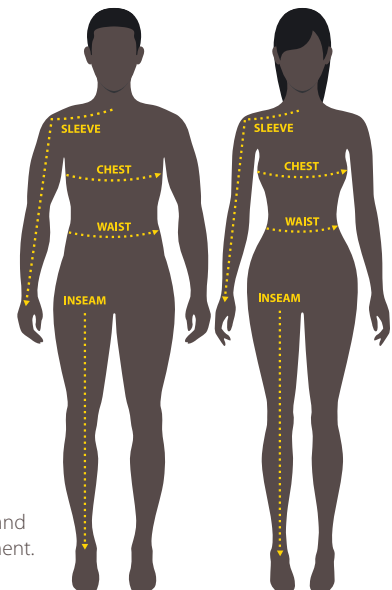
Size	XS	S	M	L	XL
Chest	31"-33"	33"-36"	36"-39"	39"-42"	42"-45"
Sleeve	27"	28"	29"	30"	31"

Find Your Pant Size

Take the waist measurement where the belt is normally worn. Measure loosely with one finger between the body and measuring tape. Find your pants size in the table below. For custom orders, please also provide the inseam measurement.

Men's Pants (updated)

Size	32	34	36	38	40	42	44	46	48
Waist	34"-36"	36"-38"	38"-40"	40"-42"	42"-44"	44"-46"	46"-48"	48"-50"	50"-52"



Special Glove Features



BackPatch®

A Revco® design of built-in heat shields primarily found on select welding gloves as a convenient layer of added protection against heat and sparks.



RestPatch®

A Revco® original built-in padding for the wrist (and forearm in some styles) found primarily on select welding gloves that offer the wearer added comfort and insulation during long welding sessions.



DragPatch®

A Revco® original side reinforcement found on select welding gloves that provides extra abrasion resistance and insulation while the hand is resting on or sliding across a welding surface.



Kevlar® Stitching

Specialized stitching found on higher quality welding and specialty gloves that offers greater protection against sparks than nylon thread and better abrasion resistance than cotton thread.



Sidewall Construction

A construction consisting of discrete pieces of material for the sides of the fingers. Found primarily on mechanic's and higher-end welding gloves, this pattern helps achieve a more three-dimensional fit. Also known as fourchettes.



KnuckleFlex™

A Revco® design meant to offer comfort, padded protection, and greater flexibility across the knuckle area. Primarily found on select driver's and mechanic's gloves.



Heat-Standoffs™

A Revco® original feature designed to create an insulating air pocket, separating the hottest point of the backpad from the back of the hand. Exclusive to Revco's high performance backpad, the BX-BP.



Seamless Index Finger

A design that places the seam of the index finger farther away from the working area, leaving the finger smooth and clear for unobstructed dexterity. Found on select welding, mechanic's, and driver's gloves.



Pre-Curved Fit

Ergonomically constructed pattern with sidewall constructed fingers to better conform to the natural curve of the hand. Found on select styles of welding and mechanic's gloves.

Special Apparel Features



CableNotch™

Our garment pass-through provides a convenient opening for lanyards on fall prevention gear. Available by request on select styles of FR and Hybrid™ jackets.



Gusseted Underarm

A feature that allows accordion-like extension under the arm to facilitate freedom of movement and arm extension. Found on Revco's standard series leather welding jackets and cape sleeves.



NoGap™ Bib Dock

A Revco® original design on BSX® cape sleeves where the gap between the bib and cape is greatly reduced, if not eliminated, to minimize the entry of sparks.



Corduroy Collars

A comfort feature that reduces the harsh chafing of leather against the skin when the collar is in the stand-up position. Available on standard and DURALite™ series leather welding jackets and cape sleeves.



Satin Lined Shoulders

A design feature that allows for increased freedom of movement by reducing leather friction against the shoulders and upper arms. Found on standard and DURALite™ series leather jackets and cape sleeves.



Scribe Pockets

A built-in upper sleeve pocket for soapstone holders and marking pens, found on most leather and FR cotton welding jackets and cape sleeves.



Zippered Inside Pocket

A spacious inner pocket, perfect for securely stowing belongings. Found inside most BSX® and AngelFire® FR welding jackets.



Snap Reinforcements

Leather reinforcements are standard among many of our leather and FR welding jackets to prevent the edges of the snap plates from digging into the garment.



Welder's Collars

A stand-up collar fashioned to an optimal height for comfort and protection against sparks. Available on all BSX® and AngelFire® welding jackets.

Leather Terminology

In general, thick animal hides can be split into two or more usable layers – the grain layer on top and the split layer(s) underneath.



Grain

The grain layer is the outermost layer of the hide (the skin side). This layer is considered the choicest part of the hide due to its pleasing appearance as well as its durability. These attributes along with rising global demand for its use in cars, furniture, purses, jackets, shoes, and wal-

lets all drive prices higher. Grain leather is commonly used with the smoother side facing out but can also be used in reversed or brushed grain variations. See the information to the right.



Split

Once the top grain layer has been removed, the remaining layer(s) are split off into split leather which is generally not as strong as the grain layer. Also known as suede, they can be identified by their varying scruffy textures on both sides. Cowhide is

thick enough to yield several layers of split leather, whereas other hides such as goatskin are too thin to split. Split layers may be further classified into functional subcategories according to the portion of the animal from which they came and may give some indication as to the expected performance. See the information to the right.

Reversed Grain

Grain leather can be employed in its reversed state with the scruffy side facing out. When used for gloves in this way, it is the smoother, grain-textured side that makes contact with the hand and helps improve feel and dexterity.

Brushed Grain

The grain leather side can also be brushed to a velvety finish in order to blend away cosmetic defects. Also known as “nubuck”, brushed grain should not be confused with “suede”, which is derived from split leather.

Side Split

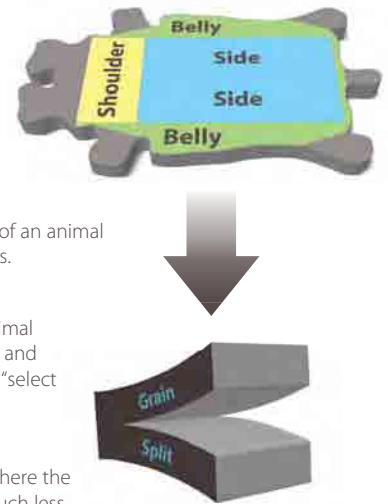
Side splits are collected from the back and side portions of an animal and yield dense, consistently durable, high-grade leathers.

Shoulder Split

Shoulder splits are collected from the shoulders of an animal and yield leathers that are slightly less uniform in density and appearance. Shoulder splits can be further classified into “select shoulder” and “shoulder” splits.

Belly (Economy) Split

Belly splits come from the stomach area of the animal, where the hide has been stretched by gravity. These leathers are much less consistent and are of lower quality than side or shoulder splits.



Various Animal Leathers

Cowhide



Perhaps the most versatile of all leathers, cowhide is very durable, sufficiently supple when properly tanned, and can yield a wide range of distinct quality grades from a single hide. These quality characteristics make it suitable for anything from welding and work gloves to welding jackets and accessories.

Pigskin



Pigskin is a resilient and moderately supple leather. The hide is not as thick as cowhide, nor is it as dense. The result is a lighter-weight leather with some inherent insulative characteristics that is suitable for making a wide range of medium thickness performance gloves and apparel.

Goatskin



Pound for pound, goatskin is comparable in its abrasion resistance to any of our other leathers. Its showcase characteristic is its soft and supple nature, which enables excellent dexterity. With its relatively thin cuts and pliability, goatskin is suitable for making most high dexterity gloves.

Kidskin



The thinnest of all the leathers Revco offers, kidskin is young goat and generally yields softer and more supple leather. We use these hides for TIG welding gloves where dexterity is of the highest importance but reasonable durability and abrasion resistance is also expected.

Elkskin



Softer and more padded than many other leathers, elkskin is the top-shelf leather of choice for our premium stick welding and driver's gloves. Its generally good performance, superior softness, and natural insulation make grain elkskin stand in a league of its own. It is available in heavy thicknesses allowing us to take heavier cuts suitable for premium welding gloves.

Deerskin



Deerskin often comes in rather heavy thicknesses, and offers much of the same excellent softness and natural insulation as elkskin. Medium to heavy cuts of split deerskin are used for our premium MIG welding gloves while thin-cut split deerskin is used for our high-dexterity TIG welding gloves.

Thumb Types

Keystone Thumb



This construction helps mirror the three-dimensional aspect of the thumb to improve articulation and comfort. Found mostly on driver's gloves.

Wing Thumb



This design has fewer exposed stitches than the ergonomic keystone thumb and is generally more versatile in movement than the straight thumb. Found on welding, driver's, leather palm, and ergonomic gloves.

Straight Thumb



This design allows for the contact surface on the tip of the thumb to be more seam-free. Found on welding, driver's, and cotton/synthetic gloves.

Reversible Thumb



A symmetric design where a worn-out glove can be removed, flipped over, and placed on the other hand for use. Found on cotton/synthetic knit gloves.

Leathers for Gloves

Stick Welding Gloves

Cowhide, due to its heavier cuts and density, is the typical leather of choice for stick welding gloves. Other leathers including elkskin and pigskin are also used. A common characteristic among them for stick gloves is sufficient thickness, which is needed to provide durability and protection. In addition, stick gloves are usually 14 inches in length and insulated on both the palm and back sides.

MIG Welding Gloves

Medium thickness leathers achieve the balance between protection and dexterity required for MIG welding. Leathers for MIG welding gloves include deerskin, pigskin, goatskin, and fine cut cowhide. Traditional MIG gloves have shorter cuffs than stick gloves and are constructed without insulation. However, our newer MIG styles include insulation on the back of the hand.

TIG Welding Gloves

Due to the precise nature of TIG welding, these gloves require thin-cut leathers that provide maximum dexterity. Our selection of leathers includes kidskin, goat-skin, and split deerskin. TIG gloves are traditionally crafted to be more form fitting and are shorter in length than stick and MIG gloves. Some of our newest styles carry insulation on the back of the hand.

Mechanic's Gloves

A combination of materials gives a variety of performance choices to our perfect fitting mechanic's gloves. Genuine leather styles are generally more durable while synthetic leather choices offer more dexterity and washability. The more advanced styles offer specialty features such as impact protection, vibration dampening, and cut resistance.

Driver's Gloves

Supple medium cut grain/split cowhide, pigskin, elkskin, and goatskin all provide the performance and durability needed for the general utility driver's gloves offer. Not only do driver's gloves sport a classic design, their full leather coverage offers great protection and durability that has been proven over many generations.

Leather Palm Gloves

Leather palm gloves are made for general, convenient protection. We typically use different grades of split cowhides and reserve grain cowhide and pigskin for specialty styles. The grade of leather is the most important factor in determining durability and performance for this category of gloves.

Leathers for Apparel

Premium Cowhide

Revco's premium cowhide welding garments use our highest grade side split cowhide leathers. These leather selections are a bit stronger, more consistent, and have a higher degree of pliability than our standard side split cowhides.

Standard Cowhide

Revco's standard side split cowhides offer the right balance between performance and value. They are the preferred choice of leather for our core line of leather welding garments. These leather selections are reliably strong and durable; they perform very well against sparks, light spatter, and abrasion; and they still retain a good degree of pliability that is important for all garments.

Grain Pigskin

Pigskin is a resilient leather with a wide range of attributes, including its relatively light weight, a natural degree of insulation, and reasonable resistance to abrasion. These factors make pigskin a good choice for crafting versatile, light weight welding apparel. As pigskin hides tend to be on the thin side, we typically use full grain leather to ensure proper performance.

Fabrics for Apparel

50 Wash FR

Revco uses flame resistant treated cotton or cotton blend fabrics typically in 9 oz. and 12 oz. weights to provide light-weight, breathable protection. Garments made from this fabric keep their FR properties for up to 50 wash cycles. This class of fabrics is common for welding apparel where direct contact with light sparks and spatter require more frequent replacement of the garments. This fabric may also be used in apparel for other applications, such as those for NFPA 70E arc flash protection when manufactured in compliance with those guidelines. Refer to the label(s) on the garments for full information.

100 Wash FR

Revco uses flame resistant treated cotton or cotton blend fabrics in various weights to provide light-weight, breathable protection. Garments made from this fabric (many for bulk custom orders) keep their FR properties for up to 100 wash cycles and is sometimes referred to as life of the garment treated FR. This class of fabrics is commonly used in apparel manufactured in compliance with NFPA 2112 flash fire and NFPA 70E arc flash safety guidelines. See the section regarding NFPA 2112 and NFPA 70E. This fabric may also be used in apparel for other applications, such as welding. Refer to the label(s) on the garments for full information.

Nomex®

DuPont's Nomex® is inherently flame resistant and a popular choice for high performance protective wear. This fabric is suitable for use in apparel manufactured in compliance with NFPA 2112 flash fire safety guidelines. See the section regarding NFPA 2112. This fabric may also be used in apparel for other applications. Refer to the label(s) on the garments for full information.

Tecasafe® plus

TenCate's Tecasafe® Plus is an inherently flame resistant fabric that offers high performance protection with excellent comfort and moisture wicking. This fabric is suitable for use in apparel manufactured in compliance with NFPA 2112 flash fire and NFPA 70E arc flash safety guidelines. See the section regarding NFPA 2112 and NFPA 70E. This fabric may also be used in apparel for other applications. Refer to the label(s) on the garments for full information.

Standards

NFPA 2112 and NFPA 70E

The NFPA 2112 and NFPA 70E are the U.S. workplace safety standards for flash fire and electrical safety, respectively. NFPA 2112 covers flash fire safety, including such concerns as the ignition of flammable vapors in an oil, gas, combustible dust or any site with flammable materials. NFPA 70E covers arc flash safety, including such concerns as incidental electric arc flash explosions during shut-off of high voltage equipment in a plant or when conducting electrical maintenance.

(For more information on NFPA guidelines including ATPV and HRC, visit NFPA.org)

Arc Rating

The arc rating (either ATPV or EBT) is the reported test value from a qualified testing lab of how a given fabric or material rated in an arc flash test, for use in HRC categorization (see below) by the NFPA 70E standard. Arc rating values are recorded in calories/centimeter².

HRC (Hazard Risk Category)

The HRC level is determined for pieces of equipment or areas of hazard, and labeled accordingly by qualified professionals. Proper arc rated personal protective clothing will also be labeled with an HRC level based on the tested arc rated values of those protective products. The idea is to make it easier for personnel to match up the proper level of personal protective equipment (PPE) needed for the prevailing level of hazard, per NFPA 70E guidelines.

10: BSX® Xtreme Welding Gear



INNOVATIVE

NEW

Durable Split Cowhide

21" Generous Cuff

restpatch
Padded Comfort Feature

dragpatch
Padded Side Reinforcement

Built-in Insulated BackPatch™

Premium Pigskin Palm



INNOVATIVE

NEW



BS88

Sizes S-2XL

Regular cuff version of BS99

INNOVATIVE



BX-BP

One size

Pre-oxidized carbon fiber felt backpad
Aluminized back & straps
Heat-Standoffs™
Fatigue-reducing flex design
Oversized maximum coverage
Sold individually

BS99

Sizes L-XL

Premium stick gloves, 21" length
Premium grain pigskin palm
Split cowhide back
Fully sock lined
DragPatch® and RestPatch®
Insulated BackPatch®
Kevlar® stitched



restpatch **dragpatch**

BS50

Sizes S-2XL

Premium stick/MIG gloves
Premium grain pigskin palm
Side split cowhide back
Ergonomic sidewall fingers
Reinforcements, DragPatch®
Fully lined, Kevlar® stitched



BM50

Sizes S-2XL

Premium pigskin MIG gloves
DragPatch®
Thermal lined back
Kevlar® stitched



BSX® Xtreme Welding Gear :11

INNOVATIVE

POPULAR

Durable Split Cowhide

restpatch

Padded Comfort Feature

dragpatch

Side Reinforcement

BM88

Sizes S-2XL

Premium pigskin MIG gloves
Cowhide back
Padded palm
Fully lined
DragPatch® and RestPatch®
Kevlar® stitched

INNOVATIVE

NEW

16" Generous Cuff

Durable Genuine Leather

restpatch

Padded Comfort Feature

Premium Pigskin Palm

INNOVATIVE

NEW

BT88

Sizes S-2XL

Premium TIG and specialty gloves
High-dexterity grain goatskin fingers
Split cowhide back and palm
Thermal lined back
DragPatch® and RestPatch®
Kevlar® stitched

BX-EXT

One size

Bracer, 16" length
Extends glove length or wear as sleeve
Durable genuine leather
Superior insulation
Wide, snug-fitting elastic
Cushioned full-length RestPatch®
Sold individually

BT50

Sizes S-2XL

Premium grain kidskin TIG gloves
FR treated cotton back and lining
Unlined palm and DragPatch®
Hook and loop wrist strap
Kevlar® stitched

BW50

Sizes S-2XL

Pigskin palm winter gloves
MultiBlend® insulated
Sure-grip reinforcements, pre-curved
Breathable waterproof liner, storm cuff
Snug spandex/neoprene fit

POPULAR



Not for Welding



12: BSX® Xtreme Welding Gear

POPULAR

FR
wear **50**
WASH



Welder's Collar

9 oz. FR Treated Cotton

Scribe Pockets

Waist Take-Up Strap

Zippered Inside Pocket

Extended Length Front

NEW

No graphic on sleeves



B9C

Sizes S-5XL

No graphic version of BX9C

BX9C

Sizes S-5XL

9 oz. FR treated cotton jacket
Welder's collar
Extended length front
Dual scribe and inside pockets
Zippered inside pocket

POPULAR



BXR9C

Sizes S-5XL

9 oz. FR treated cotton jacket
Welder's collar
Extended length front
Dual scribe and inside pockets
Zippered inside pocket



BXT9C

Sizes S-5XL

9 oz. FR treated cotton jacket
Welder's collar
Extended length front
One scribe pocket only
One inside left pocket only

INNOVATIVE



BX21CS

Sizes S-5XL

9 oz. FR treated cotton
Cape sleeve
NoGap™ bib dock
Welder's collar

BX21B

One size

Double layer bib
(attached to cape sleeve)
Extended length coverage



FTL6-BLK

Sizes S-3XL

FR treated cotton t-shirt
Long sleeves, scribe pocket
Arc rated: HRC 2, ATPV: 11.7 cal/cm²

HRC 2



INNOVATIVE



FR
wear **50**
WASH

BXRB9C/PS

Sizes S-5XL

9 oz. FR treated cotton Hybrid™ jacket
Grain pigskin sleeves
Welder's collar
Extended length front
Dual scribe and inside pockets
Zippered inside pocket



BX9-19S-RB

One size

9 oz. FR treated cotton sleeves
Reinforcement layer
19" length, wide arm elastic



BX9-19S-BK

One size

9 oz. FR treated cotton sleeves
Reinforcement layer
19" length, wide arm elastic



BX-KK-18T

One size

Kevlar® knit FR treated sleeves
Flame and abrasion resistant
ANSI cut level 4
Thumb notch construction
Double layer durability
18" length



BX-19P

One size

9 oz. Hybrid™ sleeves
FR treated cotton with grain pigskin
19" length, wide arm elastic



14: BSX® Xtreme Welding Gear



INNOVATIVE



GB200

One size

Helmet utility bag
Doubles as backpack
Accommodates most helmets
Custom imprintable
Approx. dimension: 17"W x 22"H

Padded
HelmetCatch™

Full Features
Highlighted on
Page 40

GB100

One size

Extreme welder's gearpack
Compartments for welding tools
Dual welding glove pockets
Padded HelmetCatch™ fits all helmets
Approx. dimension: 13"W x 17"D x 19"H

Helmets, gloves, and accessories are not included with any of the bag products.

BC5W-BK

One size

Cotton welding cap
Double layer construction
Neck protection
Sold by the dozen



BC5SB-BK

One size

Cushioned helmet sweatbands
For non-suspension headgear
2 per pack; sold by the dozen



NH100-BK

One size

Nomex® knit balaclava sock hood
Single layer
Nomex® stitched



BC5B-BK

One size

Cotton beanie
Black
Sold by the dozen



BC5D-BK

One size

Cotton doo rag
Built-in sweatband
Sold by the dozen



BC5B-BLU

One size

Cotton beanie
Black and royal blue
Sold by the dozen





BW9C/PS

Women's sizes XS-XL

Women's Hybrid™ jacket
9 oz. brushed FR treated cotton
Grain pigskin sleeves
Welder's collar
Dual scribe and inside pockets
Zippered inside pocket



BW9C

Women's sizes XS-XL

Women's 9 oz. jacket
FR treated brushed cotton
Welder's collar
Dual scribe and inside pockets
Zippered inside pocket



LS50

Women's sizes XS-XL

Women's premium stick/MIG gloves
Premium grain pigskin palm
Side split cowhide back
Ergonomic sidewall fingers
Reinforcements, DragPatch®
Lined back
Kevlar® stitched

NEW



334

Women's sizes S-XL

Women's premium stick/MIG gloves
Side split cowhide
CushionCore™ lining, including cuff
Reinforcements, RestPatch®
Kevlar® stitched



LT50

Women's sizes XS-XL

Women's premium TIG gloves
Premium grain kidskin palm
FR treated cotton back and lining
Unlined palm and DragPatch®
Hook and loop wrist strap
Kevlar® stitched



AngelFire®



16: Premium Stick Welding Gloves

POPULAR



Naturally Insulating Softness



850

Sizes S-2XL

Premium grain elkskin
Nomex® lined back
 Unlined reversed grain palm
 Thumb strap and rigid cuff
 Kevlar® stitched

850LH

Size L

Left hand only



750

Sizes S-XL

Premium grain elkskin
Nomex® lined back
 Unlined reversed grain palm
 Thumb strap and rigid cuff
 Kevlar® stitched

NOMEX®
FR Lining

Why Nomex®?

Nomex® is the performance FR fiber from DuPont® chosen by many firefighters and racecar drivers. It's standard issue in many of our top welding gloves.



720

Sizes S-XL

Premium grain cowhide
Nomex® lined back
 Unlined reversed grain palm
 Thumb strap and rigid cuff
 Kevlar® stitched



855

Sizes S-XL

Premium grain elkskin
Nomex® lined back
 Split elkskin palm
 Thumb strap
 Kevlar® stitched



950

Sizes L-XL

Premium grain elkskin
 Wool lining
 Reinforced back on left hand
 Kevlar® stitched



Premium Stick Welding Gloves :17

INNOVATIVE

NEW



Durable Split Cowhide

Kevlar® Stitched

restpatch®

Padded Comfort Feature



dragpatch®

Padded Side Reinforcement

831

Sizes L-XL

Premium split deerskin palm
Split cowhide back
Grain pigskin palm reinforcements
Back lined with naturally insulating wool
Cushion lined palm
DragPatch® and RestPatch®
BackPatch™ insulation on back of hand
Kevlar® stitched

Premium Split Deerskin Palm

Grain Pigskin Reinforcements

INNOVATIVE

NEW



836

Sizes L-XL

Red version of 831

POPULAR



BS50

Sizes S-2XL

BSX® line
Premium pigskin palm
Side split cowhide back
Ergonomic sidewall fingers
Reinforcements, DragPatch®
Fully lined, Kevlar® stitched

WOMEN'S



LS50

Women's sizes XS-XL

AngelFire® line
Premium pigskin palm
Side split cowhide back
Ergonomic sidewall fingers
Reinforcements, DragPatch®
Fully lined, Kevlar® stitched

INNOVATIVE

NEW



BS99

Sizes L-XL

BSX® line
Premium grain pigskin palm
Split cowhide back, 21" length
Fully sock lined
DragPatch® and RestPatch®
Extra insulation on back of the hand
Kevlar® stitched

INNOVATIVE

NEW



BS88

Sizes S-2XL

BSX® line
14" cuff version of BS99

18: Premium Stick Welding Gloves

INNOVATIVE



Kevlar®
Stitched

Snap-On
Heat Shield
(sold separately)

Shield
Bends with
Fingers

580

Size L

Side split cowhide
Snap-on heat shield
CushionCore™ lining
Kevlar® stitched
Heat shield sold separately

580LH

Size L

Left hand only



580AN

One size

Heat shield for 580
Aluminized fiberglass
Additional Nomex® layer

580AF

One size

Heat shield for 580
Aluminized fiberglass



104

Sizes L-XL

Premium side split cowhide
Aluminized back & thumb
Wool lining
Kevlar® stitched



101R-18

Size L

Premium side split cowhide
18" length
Acrylic lining
Kevlar® stitched



101R

Sizes M-XL

14" length version of 101R-18



108

Sizes M-XL

Premium grain pigskin
Acrylic lining
Kevlar® stitched



103

Size L

Select shoulder split cowhide
Wool lining
Kevlar® stitched

INNOVATIVE



25% Larger than Standard Backpads

Aluminized Face and Straps

Heat-Standoffs™ for Enhanced Insulation

Ultra Flexible Comfort

High Melting Point Carbon Fiber Felt



POPULAR



BX-BP

One size

BSX® line
Pre-oxidized carbon fiber
Aluminized back & straps
Heat-Standoffs™
Fatigue-reducing flex design
Oversized maximum coverage
Sold individually

BP

One size

Aluminized coated fiberglass
Double layer construction
Sold individually



BP-DX

One size

½" heavy duty fiberglass insulated
Double layer construction
Sold individually



BP-CB

One size

Pre-oxidized carbon fiber
Double layer construction
Sold individually



BP-VX

One size

Vermiculite fiberglass
Double layer construction
Sold individually



FG1

One size

FR knit insulating finger cots
2 finger guards per pack
Glove not included

20: High Quality Stick Welding Gloves

POPULAR

Kevlar®
Stitched

Wide
Reinforcements



CushionCore
Superior
Cushion Liner

Durable
Side Split
Cowhide

320

Sizes S-2XL

Side split cowhide
Wide reinforcements
CushionCore™ lining
Kevlar® stitched

320LH

Size L

Left hand only



200

Size L

Black & yellow version of 320



500

Size L

Green & gray version of 320

WOMEN'S

NEW



334

Women's sizes S-XL

Angelfire® women's line
Premium stick/MIG gloves
Side split cowhide
CushionCore™ lining, including cuff
Reinforcements, RestPatch®
Kevlar® stitched



100

Size L

Red & black version of 320



Reinforcements

We are flattered that many have adopted our original stick glove reinforcements, which have benefitted so many welders.

Available in 320, 320LH, 100, 200, and 500.



CushionCore™

CushionCore™ lining is the most comfortable heat-blocking liner we offer. Available in select styles of stick welding gloves, where noted.



High Quality Stick Welding Gloves :21



330

Size L

Side split cowhide
CushionCore™ lining
Kevlar® stitched

330LH

Size L

Left hand only



550

Size L

Side split cowhide
Wide reinforcements
CushionCore™ lining
Kevlar® stitched



111P

Sizes S-XL

Grain pigskin
Cotton lining
Kevlar® stitched



INNOVATIVE

360

Sizes M-XL

Select shoulder split cowhide
BackPatch™ on left hand
Special reinforcements
CushionCore™ lining
Kevlar® stitched



INNOVATIVE

370

Sizes M-XL

Select shoulder split cowhide
BackPatch™ on left hand
Special reinforcements
CushionCore™ lining
Kevlar® stitched



INNOVATIVE

365

Sizes M-XL

Select shoulder split cowhide
BackPatch™ on left hand
Special reinforcements
CushionCore™ lining
Kevlar® stitched



333

Size XS

Side split cowhide
CushionCore™ lining
Kevlar® stitched
For smaller hands



BackPatch®

The BackPatch® is a built-in shield on select welding gloves, which helps offer welders added insulation and performance.

BackPatch®
Integrated Heat Shield

22: Standard Quality Stick Welding Gloves

The Fire Thread

Kevlar® stitching is stronger than typical cotton thread and will not melt when exposed to heat like nylon thread can. Tough under fire, it is sometimes called "Fire Thread". This is why we stitch practically every pair of stick welding gloves with multi-ply Kevlar® thread.

POPULAR

Kevlar®
Stitched

Select Shoulder
Split Cowhide

Thumb
Strap



110

Sizes S-XL

Select shoulder split cowhide
Cotton lining
Thumb strap
Kevlar® stitched

110LH

Size L

Left hand only



280

Size L

Select shoulder split cowhide
CushionCore™ lining
Wide palm guard
Kevlar® stitched



310

Size L

Select shoulder split cowhide
CushionCore™ lining
Thumb strap
Kevlar® stitched



111R-18

Size L

Select shoulder split cowhide
Cotton lining
Kevlar® stitched
18" length



120

Size L

Select shoulder split cowhide
Cotton lining
Wide palm guard
Kevlar® stitched

Economy Quality Stick Welding Gloves :23



It's All in the Leather

While low-grade split leather gloves have price appeal, leather grade truly makes all the difference. The value gained from extended durability typically experienced with our Premium and High Quality category selections can pay for itself, so consider those.

113

Size L

Split cowhide
CushionCore™ lining
Wide palm guard
Kevlar® stitched

113LH

Size L

Left hand only



115

Size L

Brown version of 113



112

Size L

Split cowhide, cotton lining



111S

Size L

Split cowhide, cotton lining

111SLH

Size L

Left hand only



111Y

Size L

Split cowhide, cotton lining
Patched palm



24: MIG Welding Gloves

POPULAR

MightyMIG®

Kevlar®
Stitched

Insulated Back

Reversed Grain
Deerskin Comfort

High Dexterity
Unlined Palm



An Insider Favorite

As glove experts, it really is saying something when we say we take extra pride in our Black Stallion® MightyMIG® 39. Constructed of soft deerskin, reversed so the smooth grain is against the palm, this style is a personal favorite of ours and many welders.

39

Sizes XS-XL

Premium reversed grain deerskin
CushionCore™ lined back
Unlined palm
Kevlar® stitched



39CHMP

Sizes S-XL

Grain pigskin
CushionCore™ lined back
Unlined palm
Kevlar® stitched



39ADV

Sizes S-XL

Split cowhide
CushionCore™ lined back
Unlined palm
Kevlar® stitched



49CHMP

Sizes S-XL

Premium grain pigskin
CushionCore™ lined back
Unlined palm
Kevlar® stitched



BM50

Sizes S-2XL

Premium pigskin
Ergonomic sidewall fingers
DragPatch®
Thermal lined back
Kevlar® stitched



MIG Welding Gloves :25

INNOVATIVE
POPULAR

Durable Split
Cowhide



restpatch
Padded Comfort
Feature

dragpatch
Side Reinforcement

Premium
Pigskin Palm

BM88

Sizes S-2XL

Premium pigskin palm
Cowhide back, padded palm
DragPatch® and RestPatch®
Fully lined, Kevlar® stitched

RestPatch®

Provides cushioning to the wrist area and increases comfort along the wrist bone during sustained welding to help achieve better results.

DragPatch®

A favorite among professional welders, our exclusive DragPatch® feature insulates and pads the hand as it moves across welding surfaces.



POPULAR



25

Sizes S-XL

Premium grain cowhide
Seamless index finger
Unlined
Kevlar® stitched



25E

Sizes S-XL

Grain cowhide
Seamless index finger
Unlined
Kevlar® stitched



26

Sizes S-XL

Grain pigskin
Seamless index finger
Unlined
Kevlar® stitched



27

Sizes S-2XL

Heavier premium grain pigskin
Unlined
Kevlar® stitched

26: TIG Welding Gloves

INNOVATIVE

POPULAR

TIGSTER®

FR Treated Cotton Back

Snug Fit for Better Hand Control



Kevlar® Stitched

POPULAR



Unlined Palm

High-Dexterity, Extra Premium Grain Kidskin

T50

Sizes S-2XL

Extra premium grain kidskin palm
FR treated cotton back and lining
Unlined palm with DragPatch®
Kevlar® stitched

BT50

Sizes S-2XL

BSX® line
Premium grain kidskin palm
FR treated cotton back and lining
Unlined palm and padded DragPatch®
Strap cuff and inside fortified fingers
Hook and loop wrist strap
Kevlar® stitched

WOMEN'S



LT50

Women's sizes XS-XL

AngelFire® women's line
Premium grain kidskin palm
FR treated cotton back and lining
Unlined palm and padded DragPatch®
Strap cuff and inside fortified fingers
Hook and loop wrist strap
Kevlar® stitched

NEW



BT88

Sizes S-2XL

BSX® line
High-dexterity grain goatskin fingers
Split cowhide back and palm
Thermal lined back
DragPatch® and RestPatch®
Kevlar® stitched

INNOVATIVE



25D-BLK

Sizes S-XL

Premium fine split deerskin
DragPatch®
Kevlar® stitched



24D-BLK

Sizes S-XL

Short cuff version of 25D-BLK



INNOVATIVE
POPULAR



Kevlar®
Stitched

dragpatch®
Side Reinforcement

High-Dexterity,
Extra Premium
Grain Kidskin

25K

Sizes XS-2XL

Extra premium grain kidskin
Improved high-dexterity leather
DragPatch®
Kevlar® stitched



24K

Sizes S-XL

Short cuff version of 25K



29K

Sizes S-XL

Premium grain kidskin
DragPatch®
Kevlar® stitched

POPULAR

INNOVATIVE



25G

Sizes S-XL

Grain goatskin
Kevlar® stitched



35KF

Sizes S-2XL

Grain kidskin
CushionCore™ lined back
Seamless index finger
DragPatch®
Kevlar® stitched



35KE

Sizes S-XL

Grain kidskin
Seamless index finger
Kevlar® stitched



34KE

Sizes S-XL

Short cuff version of 35KE



35K

Sizes S-XL

Premium grain kidskin
Seamless index finger
Kevlar® stitched

28: Premium Leather Welding Apparel

POPULAR



Lightweight
Premium Grain
Pigskin

Scribe
Pockets

Satin and
Corduroy Lined



30PWC

Inside
Pocket



30PWC-BLK

DuraLite™ Jackets

Premium grain pigskin
30" length
Inside pocket and scribe pockets
Corduroy-lined collar
Satin-lined inside shoulders
Kevlar® stitched

30PWC	Sizes S-3XL	Tan
30PWC-BLK	Sizes M-3XL	Black

Half of the Weight

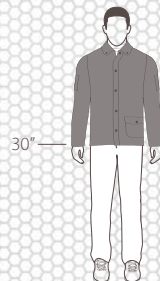
DuraLite™ jackets weigh half as much as traditional cowhide jackets without sacrificing performance.



D-30WC

Sizes S-3XL

Premium side split cowhide
30" length
Outside pocket and scribe pockets
Kevlar® stitched



Available Lengths



Waist
Take-Up Straps

Extra
Supple Feel



Standard Leather Welding Apparel :29

A Superhero's Choice

This jacket helped forge a superhero. Without mentioning names, we were told the star of a blockbuster movie personally chose our jacket to wear in the cave scene where he welded a certain iron super suit. It is no surprise to us that he went with the best.

POPULAR



Gusseted Underarms



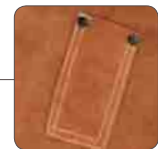
Waist Take-Up Straps



Wrist Snaps



Satin and Corduroy Lined



Scribe Pockets



Reinforced Snaps

30WC

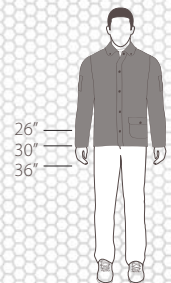
Jackets

Side split cowhide, corduroy collar, satin-lined shoulders
Outside pocket and scribe pockets, gusseted underarms, Kevlar® stitched

30WC	Sizes S-5XL	30" length
30WC-E	Sizes S-4XL	30" length, shoulder split cowhide
26W8	Sizes S-4XL	26" length
36WC	Sizes S-4XL	36" length



30WC-E



Available Lengths

30: Standard Leather Welding Apparel



Reinforced Snaps



Satin and Corduroy Lined



Scribe Pockets



Wrist Snaps



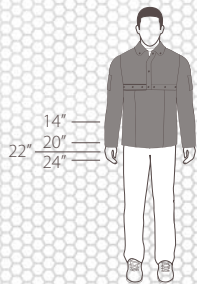
21CS with 20WB



Back View



21CS-E with 14WB-E



14"
20"
24"

Available Lengths

Cape Sleeves

Split cowhide
Scribe pockets, Kevlar® stitched

21CS	Sizes S-4XL	Side split
21CS E	Sizes S-4XL	Shoulder split

Cape Sleeve and Bib Combos

Side split cowhide
Scribe pockets, Kevlar® stitched

220CS	Sizes S-XL	20" bib
220CS-E	Sizes S-4XL	20" bib
214CS	Sizes S-4XL	14" bib
214CS-E	Sizes M-3XL	14" bib
222CS	Sizes 2XL-4XL	22" bib Extra wide

Bibs

Split cowhide
Kevlar® stitched

20WB	20" length	Side split
20WB-E	20" length	Shoulder split
24WB	24" length	Side split
14WB	14" length	Side split
14WB-E	14" length	Shoulder split
22WB	22" length	Extra wide

Standard Leather Welding Apparel :31



18SLV

25SLV

Sleeves

Side split cowhide
Kevlar® stitched

23SLV	One size	23" length, sling strap
25SLV	One size	25" length, sling strap
18SLV	One size	18" length



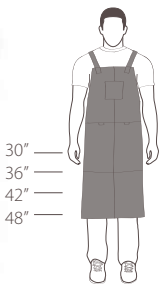
92CL

92CL/O

Leggings

Side split cowhide
Internal side bar support
Kevlar® stitched

92CL	One size	
92CL/O	One size	Rigid leather foot flare

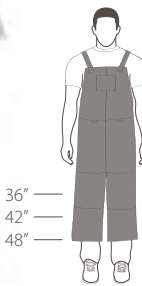


Available Lengths

Bib Aprons

Side split cowhide
Kevlar® stitched

36A	One size	36" length
42A	One size	42" length
48A	One size	48" length
30A	One size	30" length

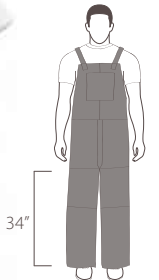


Available Lengths

Split-Leg Bib Aprons

Side split cowhide
Kevlar® stitched

48SL	One size	48" length
42SL	One size	42" length
36SL	One size	36" length

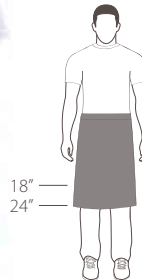


Adjustable Length

Bib Overalls

Side split cowhide, 34" inseam
Side and rear pockets
Kevlar® stitched

3834	One size	35"-38" waist
4234	One size	39"-42" waist
4634	One size	43"-46" waist
3434	One size	30"-34" waist

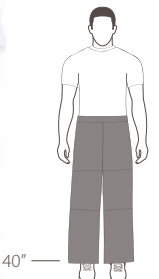


Available Lengths

Waist Aprons

Side split cowhide
Kevlar® stitched

24WA	One size	24" length
18WA	One size	18" length

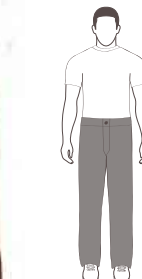


Available Lengths

Split-Leg Aprons - "Chaps"

Side split cowhide
Kevlar® stitched

40WS	One size	40" length
-------------	----------	------------



Pants

Side split cowhide, 32" inseam
Snap button fly
Kevlar® stitched

32P	Specify waist: 32" to 48"
------------	---------------------------

32: Hybrid™ Welding Apparel

POPULAR

Split Cowhide Sleeves

9 oz. FR Treated Cotton



FRB9-30C/BS

Inside Pocket



F9-30C/GS



FO9-30C/BS

Cowhide Hybrid™ Jackets

FR treated cotton with side split cowhide sleeves
Inside pocket and scribe pockets

FRB9-30C/BS	Sizes S-4XL	9 oz., royal blue/brown
F9-30C/GS	Sizes S-4XL	9 oz., green/green
FO9-30C/BS/RTT	Sizes S-4XL	9 oz., orange/brown, silver on yellow FR reflective tape
FO9-30C/BS	Sizes S-4XL	9 oz., orange/brown
FL9-30C/GS	Sizes S-4XL	9 oz., lime green/green

INNOVATIVE

WOMEN'S



BXR9C/PS

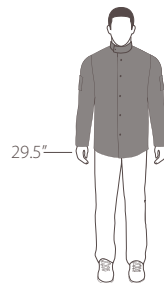


BW9C/PS

BSX® Hybrid™ Jacket

FR treated cotton with grain pigskin sleeves
Welder's collar, extended length front
Dual scribe and inside pockets
Zippered inside pocket

BXR9C/PS	Sizes S-5XL	9 oz., royal blue/black
-----------------	-------------	-------------------------



Available Lengths

BSX® Hybrid™ Sleeves

Hybrid™ FR treated cotton with grain pigskin
19" length
Wide arm elastic

BX-19P	One size	9 oz., royal blue/black
---------------	----------	-------------------------

AngelFire® Women's Hybrid™ Jacket

Women's FR treated brushed cotton body
Grain pigskin sleeves, welder's collar
Dual scribe and inside pockets
Zippered inside pocket

BW9C/PS	Women's sizes XS-XL	9 oz., chocolate brown/black
----------------	---------------------	------------------------------

Hybrid™ Welding Apparel :33



FO9-30C/BS/RTT



FL9-30C/GS

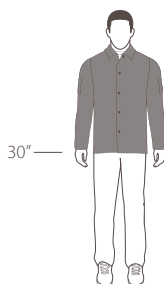
POPULAR



FRB9-30C/PS



FB2-30C/PS



Available Lengths

Pigskin Hybrid™ Jackets

FR treated cotton with grain pigskin sleeves
Inside pocket and scribe pockets

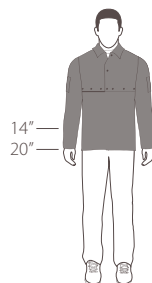
FRB9-30C/PS	Sizes S-4XL	30" length, 9 oz., royal blue/tan
FB2-30C/PS	Sizes S-4XL	30" length, 12 oz., brown/tan



FRB9-21CS/BS
with FRB9-20B



F9-21CS/GS
with F9-20B



Available Lengths



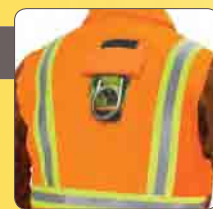
FRB9-21CS/PS with FRB9-20B



Back View

CableNotch™

This feature allows fall protection gear to remain protected under our FR or Hybrid™ jackets with the connecting gear passing through. Please call for availability.



Cowhide Hybrid™ Cape Sleeves

FR treated cotton with side split cowhide sleeves
Scribe pockets

FRB9-21CS/BS	Sizes S-3XL	9 oz., royal blue/brown
F9-21CS/GS	Sizes S-3XL	9 oz., green/green

Bibs

FR treated cotton

FRB9-20B	20" length	9 oz., royal blue
F9-20B	20" length	9 oz., green

Pigskin Hybrid™ Cape Sleeve

FR treated cotton with grain pigskin sleeves
Scribe pockets

FRB9-21CS/PS	Sizes S-3XL	9 oz., royal blue/tan
---------------------	-------------	-----------------------

34: Flame Resistant Work Shirts

FR
wear **50**
WASH



7 oz.
FR Treated
Cotton

Chest
Pockets

Convenient
Metal Snaps

Comfortably
Designed Fit

FS7-KHK



FS8-DNM

FR Work Shirts

FR treated cotton
Long sleeves

FS7-KHK	Sizes S-3XL	7 oz., khaki
FS8-DNM	Sizes S-3XL	8.5 oz., denim

TENCATE
Tecasafe® plus

FR
wear **∞**
WASH



7 oz. Tecasafe® Plus
Inherent FR

Flame Resistant
Melamine Buttons

Moisture-Wicking
Fabric

Inherent FR Work Shirts

Comfortable, roomy fit
Soft, pliable Tecasafe® plus fabric
Gusseted underarms and action back
Stitched with flame resistant aramid thread
Flame resistant melamine buttons
Long sleeves with button cuff
Moisture-wicking fabric profile
NFPA 2112 compliant
NFPA 70E compliant
Arc rated: HRC 2, ATPV = 10.1 cal/cm²
ASTM 1506-08 and OSHA 29 CFR

WT7B3NV	Sizes S-4XL	7 oz. Tecasafe® plus
----------------	-------------	----------------------

NFPA 2112 **NFPA 70E** **HRC 2** **ATPV 10.1 cal/cm²**

FR
wear **50**
WASH



FTL6-NVY

FR Long-Sleeve T-Shirts

FR treated cotton
Scribe pocket
Long sleeves, stitched with flame resistant aramid thread
Arc rated: HRC 2, ATPV: 11.7 cal/cm²

FTL6-NVY	Sizes S-3XL	Navy blue
FTL6-GRY	Sizes S-3XL	Heather gray
FTL6-LIM	Sizes S-3XL	Lime green
FTL6-ORA	Sizes S-3XL	Safety orange
FTL6-BLK	Sizes S-3XL	BSX®, black

HRC 2 **ATPV**
11.7 cal/cm²

FTL6-LIM/RTT	Sizes L-3XL	Hi-vis, silver on orange FR reflective tape, not arc rated
FTL6-ORA/RTT	Sizes L-3XL	Hi-vis, Silver on yellow FR reflective tape, not arc rated



FTL6-GRY



FTL6-LIM



FTL6-ORA



FTL6-BLK



FTL6-LIM/RTT



FTL6-ORA/RTT

FR Cotton T-Shirt



Regular Cotton T-Shirt



Flame Resistant (FR)

Flame resistant (FR) fabrics are defined in this catalog to mean clothing that will self-extinguish once the flame source and heat have been removed. The previous statement assumes that all clothing in question have been properly cared for, is within the specified number of wash cycles, and is without present contamination, such as oil, that can affect flame resistance. Please adhere to all specific product and fabric care instructions and warnings.

* The snapshots are taken after similar time lapses. They do not depict a controlled laboratory test and are presented here for illustrative purposes only.

36: Flame Resistant Jackets

FR
wear **50**
WASH

POPULAR

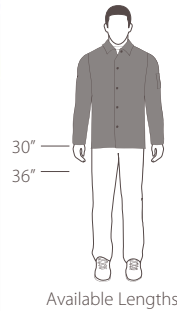


CableNotch™
Option

Scribe
Pocket

Inside
Pocket

F9-30C



Available Lengths



FO9-30C



FL9-30C

FR Jackets

FR treated cotton
Inside pocket and scribe pocket
Snap front and wrists

F9-30C	Sizes S-6XL	30" length, 9 oz., green
F2-30C	Sizes S-4XL	30" length, 12 oz., green
F9-36C	Sizes S-4XL	36" length, 9 oz., green
F2-36C	Sizes S-4XL	36" length, 12 oz., green
FO9-30C	Sizes S-5XL	30" length, 9 oz., orange
FL9-30C	Sizes S-4XL	30" length, 9 oz., lime green



FO9-30C/RTT



FL9-30C/RTT



F9-30C-WA



F9-30CV

Reflective FR Jackets

FR treated cotton
Inside pocket and scribe pocket
Snap front and wrists
Hi-vis FR reflective tape

FL9-30C/RTT	Sizes S-4XL	30" length, 9 oz., lime green
FO9-30C/RTT	Sizes S-4XL	30" length, 9 oz., orange

Speciality Green FR Jackets

FR treated cotton
Inside pocket and scribe pocket
Snap front and wrists

F2-30CV	Sizes S-4XL	30" length, 12 oz., hook and loop
F9-30C-WA	Sizes S-4XL	30" length, 9 oz., Welding America Together™
F9-30CV	Sizes S-4XL	30" length, 9 oz., hook and loop

FR
wear **50**
WASH



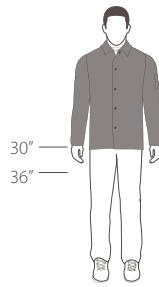
FN9-30C



FR9-30C



FB2-30C



Available Lengths

FR Jackets

FR treated cotton
Inside pocket and scribe pocket
Snap front and wrists

FN9-30C	Sizes S-4XL	30" length, 9 oz., navy
FN9-36C	Sizes S-4XL	36" length, 9 oz., navy
FR9-30C	Sizes S-4XL	30" length, 9 oz., red
FB2-30C	Sizes S-4XL	30" length, 12 oz., brown

POPULAR



BX9C

POPULAR



BXR9C



BXT9C

WOMEN'S



BW9C

BSX® Jackets

FR treated cotton jacket
Welder's collar, waist take-up straps
Extended length front and zippered inside pocket
Dual scribe and inside pockets

BX9C	Sizes S-5XL	9 oz., black/red
BXR9C	Sizes S-5XL	9 oz., royal blue/black

BSX® Jacket

FR treated cotton jacket
Welder's collar
Extended length front
Scribe pocket and inside left pocket only

BXT9C	Sizes S-5XL	9 oz., Khaki
--------------	-------------	--------------

AngelFire® Women's Jacket

Women's FR treated brushed cotton jacket
Welder's collar, waist take-up strap
Dual scribe and inside pockets
Zippered inside pocket

BW9C	Women's sizes XS-XL	9 oz., Chocolate brown
-------------	---------------------	------------------------

38: Flame Resistant Apparel

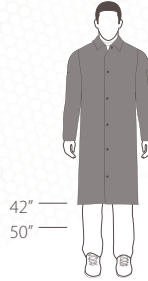
FR
wear **50**
WASH



FN9-42C



F9-42C



Available Lengths

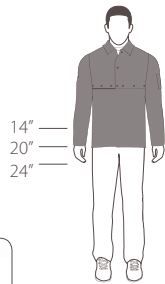
Shop Coats

FR treated cotton
Inside pocket and scribe pocket
Snap front and wrists

FN9-42C	Sizes S-4XL	42" length, 9 oz., navy
F9-50C	Sizes S-4XL	50" length, 9 oz., green
F2-42C	Sizes S-4XL	42" length, 12 oz., green
F9-42C	Sizes S-4XL	42" length, 9 oz., green



F9-21CS with F9-20B



Available Lengths

Cape Sleeves

FR treated cotton
Scribe pocket
Snap front and wrists

F9-21CS	Sizes S-4XL	9 oz., green
F2-21CS	Sizes S-4XL	12 oz., green
FB2-21CS	Sizes S-4XL	12 oz., brown
FN9-21CS	Sizes S-4XL	9 oz., navy

Bibs

FR treated cotton
Snap attachment

F9-20B	20" length, 9 oz., green
F9-14B	14" length, 9 oz., green
F9-24B	24" length, 9 oz., green
F2-20B	20" length, 12 oz., green
FB2-20B	20" length, 12 oz., brown
FN9-20B	20" length, 9 oz., navy

Sleeves

FR treated cotton
Standard elastic wrist

F9-18S	18" length, 9 oz., green
F9-23S	23" length, 9 oz., green
F2-23S	23" length, 12 oz., green
F2-18S	18" length, 12 oz., green
FB2-23S	23" length, 12 oz., brown
F09-18S	18" length, 9 oz., orange

FR treated cotton
Cuff elastic wrist

F9-218S	18" length, 9 oz., green
F9-223S	23" length, 9 oz., green
F2-223S	23" length, 12 oz., green
F2-218S	18" length, 12 oz., green

FR treated cotton
Snap wrist

F9-118S	18" length, 9 oz., green
F9-123S	23" length, 9 oz., green
F2-118S	18" length, 12 oz., green



F9-118S



F9-218S



F9-18S



Flame Resistant Apparel :39



F9-32CA/PT

FN9-32CA/PT/RTT

FO9-32CA/PT



Sizes S-5XL

Coveralls

FR treated cotton
Pass-through front pockets
Inside adjustable waist
Blank name badge

F9-32CA/PT	Sizes S-5XL	9 oz., green
FN9-32CA/PT/RTT	Sizes S-5XL	9 oz., navy, silver on yellow FR reflective tape
FN9-32CA/PT	Sizes S-5XL	9 oz., navy
FO9-32CA/PT	Sizes S-5XL	9 oz., orange

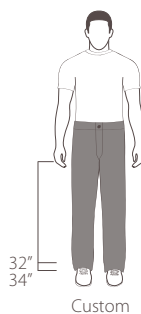
Private Label

Private label imprinting is available on select FR coveralls with a minimum bulk order requirement and extra lead time.



F9-32P

FN9-32P

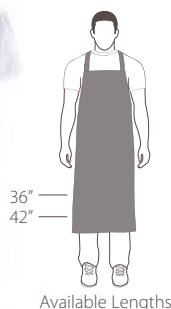


Custom

Pants

FR treated cotton
Hip pockets
Industrial belt loop
Zipper fly

F9-32P	Specify waist: 32" to 48" 32" inseam, 9 oz., green
F9-34P	Specify waist: 32" to 48" 34" inseam, 9 oz., green
FN9-32P	Specify waist: 32" to 48" 32" inseam, 9 oz., navy

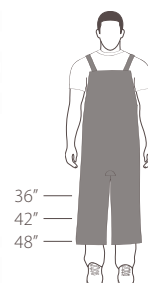


Available Lengths

Bib Aprons

FR treated cotton
Kevlar® stitched

F9-36A	36" length, 9 oz., green
F9-42A	42" length, 9 oz., green
F2-36A	36" length, 12 oz., green
FN9-42A	42" length, 9 oz., navy



Available Lengths

Split-Leg Bib Aprons

FR treated cotton

F9-36SL	36" length, 9 oz., green
F9-42SL	42" length, 9 oz., green
F9-48SL	48" length, 9 oz., green
F2-42SL	42" length, 12 oz., green

40: Gear Bags

INNOVATIVE



Sturdy Carrying Handle

Helmets, gloves, and accessories are not included with any of the bag products.

Complimentary Carabiner

5-Point Rigging with Fast Drawbridge Design

Dual Welding Glove Pockets

Padded HelmetCatch®



View from top. Pockets designed to organize hammers, brushes, tip cleaners, electrodes, and more.



Unique HelmetCatch™ introduces secure 5-point rigging and fast drawbridge design.



Protective divider easily stores torch tips, soapstones, and valuables.

GB100

One size

BSX® line
Extreme welder's gearpack
Compartments for welding tools
Dual welding glove pockets
Padded HelmetCatch™ fits all helmets
Approx. dim.: 13"W x 17"D x 19"H



GB200

One size

BSX® line
Helmet utility bag
Doubles as backpack
Accommodates most helmets
Custom imprintable
Approx. dim.: 17"W x 22"H



GB150

One size

Welder's tool bag with roomy access
Inside pockets and zippered end pocket
Accommodates welding helmet and tools
Approx. dim.: 20"W x 12"D x 16"H





134

One size

Split cowhide cable cover
1 3/4" diameter opening
Sold by the foot



114

One size

Split cowhide cable cover
1 1/4" diameter opening
Sold by the foot



BC5SB-BK

One size

BSX® line
Cushioned helmet sweatbands
For non-suspension headgear
2 per pack; sold by the dozen



C114V

One size

Split cowhide cable cover
1 1/4" diameter opening
Hook and loop closure
Sold in 5' increments

C134V 1 3/4" diameter



RH

One size

Split cowhide rod holder
Clasp for belt loop



SP

One size

Split cowhide shoe protector
Sold in pairs



FKP

One size

High denier nylon knee pad
Poly cap reinforced
Durable quick latch fastener
Sold in pairs



EKP

One size

Standard nylon knee pad
Poly cap reinforced
Hook and loop fastener
Sold in pairs



HB

One size

Split cowhide helmet bib
Metal clip attachment

HBV Hook and loop attachment



FG1

One size

FR knit insulating finger cots
2 finger guards per pack
Glove not included

42: Balaclava Sock Hoods & Headwear



Single Layer
PBI® Blend

Front and Back
Flap Drapes

PRH300

One size

Balaclava sock hood
Single layer PBI® blend knit
Front and back flap drapes

NH300 Nomex® knit
NH300-BK Black Nomex® knit
KH300 Kevlar® knit



NH200

One size

Balaclava sock hood
Double layer Nomex® knit
Single layer circular drape

KH200 Kevlar® knit
PRH200 PBI® blend knit



KH100

One size

Balaclava sock hood
Single layer Kevlar® knit

NH100 Nomex® knit
PRH100 PBI® blend knit



NH100-BK

One size

Balaclava sock hood
Single layer Nomex® knit
Nomex® stitched



NH400

One size

Balaclava sock hood
Double layer Nomex® knit
Front and back flap drapes



F9-HOOD

One size

9 oz. FR treated cotton hood
Full drape
Hook and loop fastener



F9-10SC

One size

9 oz. FR treated cotton cap
Rear drape



FH

One size

Padding for front head gear strap
Sheepskin with snap-on fit
Sold individually



BH

One size

Padding for rear head gear strap
(includes hole to accommodate strap
adjuster knob)
Sheepskin with snap-on fit
Sold individually

POPULAR



BC5W-BK

One size
 BSX® line
 Cotton welding cap
 Double layer construction
 Neck protection
 Sold by the dozen



BC5D-BK

One size
 BSX® line
 Cotton doo rag
 Built-in sweatband
 Sold by the dozen



BC5B-BK

One size
 BSX® line
 Cotton beanie
 Black
 Custom imprintable
 Sold by the dozen



BC-SPY

One size
 Cotton beanie
 Black Stallion® logo
 Black with yellow spiderweb
 Sold by the dozen



BC5B-BLU

One size
 BSX® line
 Cotton beanie
 Black and royal blue
 Custom imprintable
 Sold by the dozen



BC-CAM

One size
 Cotton beanie
 Black Stallion® logo
 Camouflage
 Sold by the dozen



BCT-RWB-WAT

One size
 Cotton beanie cap
 Welding America Together™ logo
 Sold by the dozen



BC5SB-BK

One size
 BSX® line
 Cushioned helmet sweatbands
 For non-suspension headgear
 2 per pack; sold by the dozen

44: Synthetic Leather Mechanic's Gloves

POPULAR

ToolHANDZ®



99PLUS-BLUE

Sizes S-2XL

ToolHandz® performance series
Premium synthetic leather palm
Reinforced palm and fingers
Snug spandex fit

Snug Spandex
Back

Strap
Cuff

Ultra Durable
Synthetic
Leather



99PLUS-BLK

Sizes S-2XL

ToolHandz® performance series
Premium synthetic leather palm
Reinforced palm and fingers
Snug spandex fit

Reinforced
Fingers

NEW



GX101

Sizes S-2XL

ToolHandz® performance series
Synthetic leather palm
Reinforced palm and fingers
KnuckleFlex™ feature
Padded BumpPatch™ side feature
Snug spandex/neoprene fit



19FX-BLK

Sizes S-2XL

FlexHand™ value series
Synthetic leather palm
Reinforced palm
Snug spandex/neoprene fit



99PRO-BLK

Sizes S-2XL

ToolHandz® performance series
Synthetic leather palm
Single palm dexterity
Sweat wipe
Snug spandex fit



98HV

Sizes S-2XL

FlexHand™ value series
Synthetic leather palm
Sure-grip reinforcements
Generous reflective coverage
Snug spandex fit



99HVA

Sizes S-2XL

ToolHandz® performance series
Synthetic leather palm
Sure-grip reinforcements
Generous reflective coverage
Snug spandex fit

Synthetic Leather Specialty Mechanic's Gloves :45

NEW

TOOLHANDZ



GX105

Sizes M-2XL

ToolHandz® performance series
 Synthetic leather palm with Teflon® infused reinforcements & PVC dots
 Full coverage extreme finger guards and internal cushioned impact layer
 Reinforced index and thumb bridge, snug spandex fit
 Tested: ASTM F1790-05 (backside), ASTM D3884-09, and ASTM D2632

NEW

TOOLHANDZ



GX100

Sizes M-2XL

ToolHandz® performance series
 Synthetic leather palm
 Full coverage finger guards
 Vibration-dampening palm, padded BumpPatch™ side feature
 Reinforced index and thumb bridge; snug spandex fit

NEW



GX104

Sizes M-2XL

ToolHandz® performance series
 Synthetic leather padded silicone grip palm
 Protective finger guards
 Padded BumpPatch™ side feature
 Reinforced index and thumb bridge
 Snug spandex fit



98SB

Sizes M-2XL

ToolHandz® performance series
 Synthetic leather palm
 Protective finger guards
 Vibration-dampening palm
 Sure-grip reinforcements
 Snug spandex/neoprene fit



99TR

Sizes S-2XL

ToolHandz® performance series
 Synthetic leather palm
 Protective finger guards
 Silicone grip on padded palm
 Sweat wipe
 Snug spandex fit



98F

Sizes M-2XL

ToolHandz® performance series
 Synthetic leather palm
 Open 3-finger dexterity design
 Sure-grip reinforcements
 Sweat wipe
 Snug spandex/neoprene fit

46: Genuine Leather Mechanic's Gloves

TOOLHANDZ®

POPULAR



Strap Cuff

Snug Spandex/ Neoprene Back

High-Dexterity Premium Grain Goatskin Palm

Reinforced Fingers

Don't Chap My Hide

As in many situations, the real deal is usually better than imitations. When it comes to durability, synthetic leathers do a good job especially for the fine cuts they come in but good old genuine grain leather usually holds up better.

99ACE-G

Sizes S-2XL

ToolHandz® performance series
Premium grain goatskin palm
Sure-grip reinforcements
Sweat wipe
Snug spandex/neoprene fit



99ACE-P

Sizes S-2XL

ToolHandz® performance series
Premium grain pigskin palm
Sure-grip reinforcements
Sweat wipe
Snug spandex/neoprene fit



99-BLUE

Sizes S-2XL

ToolHandz® performance series
Reversed grain goatskin palm
Brushed fine-gauge leather
Single palm dexterity
Snug spandex fit



99G-BLUE

Sizes S-2XL

ToolHandz® performance series
Premium grain goatskin palm
Single palm dexterity
Snug spandex fit



99DEER

Sizes S-2XL

ToolHandz® performance series
Premium grain deerskin palm
Single palm dexterity
Sweat wipe
Snug spandex/neoprene fit



Genuine Leather Mechanic's Gloves :47

TOOLHANDZ®



Hi-Visibility All Around

Not only does this glove offer great fit and long-lasting value, it has safety written all over it. From the lime green flex fabric to the high quality reflectives on the fingertips, thumb, and knuckle reinforcement, you will be able to see this one from far away.

99HV

Sizes S-2XL

ToolHandz® performance series
Grain pigskin palm
Sure-grip reinforcements
Generous reflective coverage
Snug spandex fit



19GT

Sizes M-XL

FlexHand™ value series
Grain goatskin palm
Leather reinforcements
Snug spandex fit



19C

Sizes M-XL

FlexHand™ value series
Grain cowhide palm
Single palm dexterity
Snug heavy spandex fit



19MXC

Sizes S-2XL

FlexHand™ value series
Split cowhide
PVC reinforcements
Snug spandex fit
Reinforced palm

Winter Lined

See the winter section for a complete selection of winter lined gloves.



GW101

48: Driver's Gloves

POPULAR

Heavy Premium
Grain Elkskin

Ergonomic
Keystone
Thumb



17

Sizes S-XL

Heavy premium grain elkskin
Inside seam
Keystone thumb



i17

Sizes S-XL

Grain deerskin
Standard weight version of 17
Outside seam
Keystone thumb



17A

Sizes S-XL

Pull strap version of 17



9P

Sizes S-XL

Premium grain pigskin
Inside seam
Keystone thumb



9PB

Sizes S-XL

Economy grain pigskin
Outside seam
Straight thumb (may vary)



9G

Sizes S-XL

Premium grain goatskin
Inside seam
Keystone thumb



9GE

Sizes S-XL

Grain goatskin
Inside seam
Straight thumb



9GB

Sizes S-XL

Grain goatskin/split cowhide
Inside seam
Keystone thumb

POPULAR

Durable
Premium Grain
Cowhide

Ergonomic
Keystone
Thumb



91

Sizes S-XL

Premium grain cowhide
Inside seam
Keystone thumb



93

Sizes S-2XL

Grain cowhide
Outside seam
Keystone thumb



94

Sizes S-XL

Economy grain cowhide
Outside seam
Straight thumb



92

Sizes S-XL

Premium grain cowhide
Seamless index finger
Wing thumb



91DP

Sizes S-2XL

Premium grain cowhide
Inside seam
Reinforced palm
Keystone thumb



95

Sizes S-XL

Premium grain cowhide
Inside seam
Pull strap
Keystone thumb



96

Sizes S-XL

Grain cowhide
Outside seam
Pull strap
Keystone thumb

50: Driver's Gloves

POPULAR

Durable
Premium Grain
Cowhide Palm

KEVLAR
STITCHED

Value-Conscious
Split Cowhide Back



Ideal for Spot Welding

97K and 97SW feature affordable price points, durable cowhide construction, and spark-resistant Kevlar® stitching.

POPULAR



97K

Sizes S-2XL

Premium grain cowhide palm
Split cowhide back
Outside seam
Keystone thumb
Kevlar® stitched

KEVLAR
STITCHED

97SW

Sizes S-2XL

Premium grain cowhide palm
Split cowhide back
Reinforced palm
Seamless index finger
Wing thumb
Kevlar® stitched

KEVLAR
STITCHED

97

Sizes S-XL

Grain cowhide palm
Split cowhide back
Outside seam
Keystone thumb

Winter Lined Versions

See the winter section for a complete selection of winter-lined gloves.



CushionCore



10

Sizes S-XL

Economy split cowhide
Outside seam
Straight thumb

INNOVATIVE



97F

Sizes S-XL

Premium grain cowhide palm
Split cowhide back
KnuckleFlex™ feature
Keystone thumb

INNOVATIVE



93HV

Sizes S-XL

Premium grain cowhide
KnuckleFlex™ with reflectives
Inside seam
Keystone thumb

Leather Palm Gloves :51

5R

Size L

Side split cowhide
Reinforced palm and three fingers
¾ leather back
Rubberized short cuff
Kevlar® stitched

KEVLAR
STITCHED

8R

Sizes L

Long cuff version of 5R



5A

Sizes S-XL

Side split cowhide
Rubberized short cuff
Kevlar® stitched

KEVLAR
STITCHED

POPULAR



Sturdy Rigid Cuff

KEVLAR
STITCHED

Side Split Cowhide
¾ Back Protection

Long-lasting Top
Grade Leather

Reinforced Palm and
Three Fingers

Can You Rip Leather?

Not normally, but you might be unpleasantly surprised by some economy leather palm work gloves. Leather quality is the biggest factor in determining durability. Not surprisingly, the lowest price point choices may yield only a fraction of the service life of better ones.



5F

Size L

Side split cowhide
Full leather back
Rubberized short cuff
Kevlar® stitched



8F

Size L

Long cuff version of 5F



5Y

Size L

Heavy split cowhide
Patched palm
Rubberized short cuff



6Y

Size L

Select shoulder split
One-piece palm



5CG

Sizes S-XL

Grain cowhide
Rubberized short cuff

52: Leather Palm Gloves

It's All in the Leather

While low-grade split leather gloves have price appeal, leather grade truly makes all the difference. The value gained from extended durability typically experienced with our better quality leather palm work gloves found on page 51 can pay for itself. If your customers are replacing gloves weekly, or even daily, help them do the math.

Rubberized Short Cuff

Heavier Shoulder Split Cowhide



5B

Sizes S-2XL

Shoulder split cowhide
Rubberized short cuff



8B

Size L

Heavier shoulder split cowhide
Rubberized long cuff

6B

Size L

Heavier shoulder split cowhide
Rubberized short cuff



6DP

Size L

Select shoulder split cowhide
Padded double palm
Rubberized short cuff



5DP

Size L

Shoulder split cowhide
Jointed palm



5FB

Size L

Select shoulder split cowhide
Full leather back
Plasticized short cuff



8FB

Size L

Long cuff version of 5FB



5AB

Sizes S-XL

Select shoulder split cowhide
Plasticized short cuff



6P

Size L

Grain pigskin palm
Split cowhide back
Cotton lining
Canvas short cuff



5P

Size L

Grain pigskin
Rubberized short cuff



5B-LIM

Size L

Shoulder split cowhide
Lime green hi-vis fabric
Reflective knuckle strap on back
Fully lined palm
Rubberized short cuff



5B-ORA

Size L

Shoulder split cowhide
Safety orange hi-vis fabric
Reflective knuckle strap on back
Fully lined palm
Rubberized short cuff



3B

Size L

Economy split cowhide
Rubberized short cuff



7B

Sizes S, L

Shoulder split cowhide
Full canvas back
Knit wrist



4D

Size L

Shoulder split cowhide
Denim short cuff



4DE

Size L

Shoulder split cowhide
Denim short cuff
Patched palm



5BE

Size L

Shoulder split cowhide
Starched cuff



5BEE

Size L

Shoulder split cowhide
Starched cuff
Patched palm

54: Winter Insulated Gloves



NEW

Hi-Vis Spandex Back

Reinforced Palm

Protective Guards

GW101

Sizes S-2XL

Synthetic leather palm
Hi-Vis spandex back
Waterproof lining
Reinforced palm
Protective guards on back
MultiBlend™ insulation



Who Needs All Those Guards?

With frigid cold hands in the winter, it is a good idea to protect them against impact. Our GW101 helps to do just that with impact protective finger and knuckle guards. For good measure, we designed it to be waterproof lined and feature safety colors.



NEW

GW103

Sizes M-2XL

Synthetic leather palm
Spandex back
Waterproof lining
Fleece insulation
Reinforced palm
KnuckleFlex™ feature



POPULAR

99ACE-PW

Sizes XS-2XL

Premium grain pigskin palm
Snug spandex/neoprene fit
Thinsulate™ insulation
Sure-grip reinforcements



INNOVATIVE

BW50

Sizes S-2XL

Premium grain pigskin palm
Snug spandex/neoprene fit
Waterproof lining
MultiBlend™ insulation
Sure-grip reinforcements
Inner storm cuff



INNOVATIVE



15FH-MAX2

Sizes S-XL

Premium grain pigskin palm
Polar fleece back
Waterproof lining
MultiBlend™ insulation
Sure-grip reinforcements
Storm cuff



15FH-BLK

Sizes S-XL

Premium grain pigskin palm
Polar fleece back
MultiBlend™ insulation



15HV

Sizes S-2XL

Synthetic leather padded palm
Hi-vis snug spandex with reflectives
Waterproof lining
MultiBlend™ insulation
Storm cuff



15FH-GRAY

Sizes XS-2XL

Split cowhide palm
Polar fleece back
Gray



15FH-CAMO

Sizes XS-2XL

Split cowhide palm
Polar fleece back
Camouflage



17T

Sizes S-XL

Premium heavy grain elkskin
Thinsulate™ insulation



i17T

Sizes S-XL

Premium grain deerskin
Thinsulate™ insulation



93W

Sizes S-2XL

Grain cowhide
CushionCore™ insulation



9PW

Sizes S-2XL

Grain pigskin
Fleece lining

56: Winter Insulated Gloves

POPULAR



5LP

Sizes S-XL

Grain pigskin
MultiBlend™ insulation



5LWP

Sizes L-2XL

Select shoulder split cowhide
MultiBlend™ insulation
Waterproof lining



5YW

Size L

Heavy split cowhide
CushionCore™ insulation
Patched palm



6LPK

Sizes S-XL

Grain pigskin palm
ImpactNylon™ back
MultiBlend™ insulation
Storm cuff



15PK

Sizes S-XL

Grain pigskin palm
ImpactNylon™ half back
MultiBlend™ insulation
Storm cuff



2300T

Sizes M-XL

Thermal glove
Latex rubber grip
Napped heavy cotton/poly knit

POPULAR



2121

Size L

Moisture-wicking glove liner
Reversible
White



2121-BLU

Size L

Moisture-wicking glove liner
Reversible
Blue



WL350

One size

FR twill winter liner
Heavy fleece lining
Added neck protection
Pockets for heat packs



WL300

One size

Twill winter liner
Sherpa pile lining
Added neck protection
Pockets for heat packs



WL100

One size

Twill winter liner
Heavy fleece lining
Pockets for heat packs



WL100HV

One size

Twill winter liner
Enhanced visibility
Heavy fleece lining
Pockets for heat packs

INNOVATIVE



WL500

One size

Polar fleece winter liner
Fleece lining
Not for use with heat packs



Scalp-Hugging Warmth

Three reasons to switch to the WL500:
1) Snug sides keep cold wind out
2) Fits comfortably under hard hat
3) Doesn't look like your father's liner

58: Nitrile, Latex, & PU Gloves

AccuFlex™

GC106

Sizes S-XL

Nitrile foam coated
13 gauge nylon

NEW

Comfortable
13 Gauge
Nylon

Nitrile Foam
Resilient, Soft
Grip



NEW



GC105

Sizes S-XL

Nitrile coated
13 gauge nylon

Cotton/Polyester
String Knit



Latex
Grip

2300B

Sizes S-XL

Latex coated
Cotton/polyester string knit



AccuFlex®

AccuFlex® gloves ship with attractive tags that are economical and provide hassle-free displaying on merchandising hooks.

Nitrile, Latex, & PU Gloves :59

NEW



GC100

Size M-XL

Latex coated
Sandy textured grip
13 gauge nylon

NEW



GC101

Size L-XL

Nitrile coated
Orange fingertips
13 gauge nylon

NEW



GC102

Size L-XL

Latex coated
Sandy textured grip
10 gauge napped terry acrylic

NEW



GC103

Sizes S-XL

Latex coated
Sandy textured finish
10 gauge cut-resistant Kevlar®
EN388 cut level 3

NEW



GC104

Sizes S-XL

Polyurethane (PU) coated
13 gauge nylon

NEW



GC107

Sizes S-XL

Nitrile coated
Gripping dots
13 gauge nylon

KEVLAR®



2300

Sizes S-XL

Atlas™ brand
Rubber coated
Cotton/polyester string knit



2300T

Sizes M-XL

Atlas™ brand
Thicker napped version of 2300



2300EE

Size L

Value latex coated
Cotton/polyester string knit

60: PVC & Nitrile Gloves



5114

Size L

Sandy textured finish PVC coated
14" long
Double dipped
Jersey lining



5114S

Size L

Smooth finish PVC coated
14" long
Interlock lining



5100

Size L

Sandy textured finish PVC coated
Knit wrist
Double dipped
Jersey lining



5100S

Size L

Smooth finish PVC coated
Knit wrist
Interlock lining



5112

Size L

Sandy textured finish PVC coated
12" long
Double dipped
Jersey lining



5112S

Size L

Smooth finish PVC coated
12" long
Interlock lining



5314

Size L

Nitrile coated
Jersey lining
Safety cuff



5300

Size L

Nitrile coated
Interlock lining
Knit wrist



5500

Size L

Textured finish PVC coated
Jersey lining
Double dipped cushioning
Knit wrist

NEW



SK5-LP

Sizes L-XL

ArmorFlex® cut resistant gloves
Kevlar®/steel with blended fibers
Split cowhide palm
Knit wrist
ANSI cut level 4
EN388 cut level 5

ArmorFlex **KEVLAR**

NEW



SK5-NT

Sizes M-XL

ArmorFlex® cut resistant gloves
Kevlar®/steel with blended fibers
Nitrile coated palm
Strap wrist
ANSI cut level 3
EN388 cut level 5

ArmorFlex **KEVLAR**



KN-18G/D

Size L

Kevlar® knit cut resistant gloves
PVC gripping dots
ANSI cut level 2

KEVLAR



KN-18G

Size L

Kevlar® knit cut resistant gloves
ANSI cut level 2

KEVLAR

NEW



GC103

Sizes S-XL

10 gauge Kevlar®
Cut resistant gloves
Latex coated
Sandy textured finish
EN388 cut level 3

AccuFlex **KEVLAR**

POPULAR



KK-23T

One size

23" Kevlar® knit sleeve
Double layer with thumb hole
Cut, abrasion, and flame-resistant
ANSI cut level 4
Sold individually

KK-18T 18" length
KK-14T 14" length
KK-10T 10" length

KEVLAR



BX-KK-18T

One size

BSX® line
18" Kevlar® knit sleeves
Double layer, thumb hole
Cut, abrasion, and flame-resistant
ANSI cut level 4
Sold in pairs

KEVLAR



KK-23S

One size

23" Kevlar® knit sleeve
Double layer
Cut, abrasion, and flame-resistant
ANSI cut level 4
Sold individually

KK-18S 18" length

KEVLAR

62: Hot Mill & Chore Gloves



1424

Size L

24 oz. cotton hot mill
Gauntlet cuff



HandyHandz™

HandyHandz™ gloves ship with tags that keep costs down and provide hassle-free displaying on merchandising hooks.



1224

Size L

24 oz. cotton hot mill
Band top cuff

1230

Size L

30 oz. version of 1224



888

Size L

Golden chore
2-ply fleece palm
Rubberized long cuff



4079

Sizes L

Golden chore
Canvas back
P.E. gauntlet cuff



4078

Sizes L

Golden chore
Knit wrist

Jersey & String Knit Gloves :63



1109

Sizes S, L

9 oz. brown jersey



2119

Size L

9 oz. brown jersey
Cotton fleece lining



1119

Size L

9 oz. brown jersey
Gripping dots



2118

Sizes S-XL

Cotton/poly. string knit
Gripping dots
Reversible



1108

Sizes S, L

8 oz. cotton canvas



2111

Sizes XS-L

Cotton/polyester string knit
Reversible



1112

Sizes S, L

12 oz. version of 1108

2211

Sizes S-L

Nylon string knit
Reversible



64: Arc Flash Protection



NEW

NEW

Adjustable
Waist

7 oz. Tecasafe® plus
Inherent FR

Arc Rated
HRC 2 with an
ATPV of 10.1 cal/cm²

Advanced
Moisture-Wicking

Superior Wear
and Tear

Excellent
Fit and Comfort

CT7B2NV

Sizes S-5XL

Tecasafe® plus flame resistant coveralls
Gusseted underarms and action back
Stitched with flame resistant aramid thread
Adjustable elastic inside waist
Pass-through pockets
Chest pockets and scribe pocket
Hip pockets
Two-way FR zipper
32" inseam
Arc rated: HRC 2, ATPV = 10.1 cal/cm²
ASTM 1506-08 and OSHA 29 CFR

NFPA 2112 **NFPA 70E** **HRC 2** **ATPV 10.1 cal/cm²**



TENCATE Tecasafe® plus

FR wear **∞ WASH**

WT7B3NV

Sizes S-4XL

Tecasafe® plus flame resistant work shirt
Gusseted underarms and action back
Stitched with flame resistant aramid thread
Flame resistant melamine buttons
Long sleeves with button cuff
Moisture-wicking fabric profile
Arc rated: HRC 2, ATPV = 10.1 cal/cm²
ASTM 1506-08 and OSHA 29 CFR

NFPA 2112 **NFPA 70E** **HRC 2** **ATPV 10.1 cal/cm²**



Industrial Size
Loops

PT7B2NV

Call for sizes

Tecasafe® plus flame resistant pants
Stitched with flame resistant aramid thread
Hip and rear pockets
Wide belt loops
FR zipper
32" inseam
Arc rated: HRC 2, ATPV = 10.1 cal/cm²
ASTM 1506-08 and OSHA 29 CFR

NFPA 2112 PENDING **NFPA 70E** **HRC 2** **ATPV 10.1 cal/cm²**



NEW

ARCSTER™
a60



Premium Grain Kidskin

Extended Cuff

FR Treated Cotton

dragpatch®
Padded Side Reinforcement

A60

Sizes S-2XL

Arcster™ 12" arc rated gloves
Premium grain kidskin unlined palm
FR treated cotton back
Padded DragPatch® side reinforcement
Kevlar® stitched
Tested under ASTM F1959 (modified panel)
Arc rated: ATPV = 25.7 cal/cm²
Not rated for shock protection

ATPV
25.7 cal/cm²



FR wear 50 WASH

Scribe Pocket

FR Treated Cotton

FR T-Shirts

FR treated cotton
Scribe pocket
Long sleeves
Arc rated: HRC 2, ATPV: 11.7 cal/cm²

FTL6-GRY	Sizes S-3XL	Heather gray
FTL6-NVY	Sizes S-3XL	Navy blue
FTL6-BLK	Sizes S-3XL	BSX®, black
FTL6-ORA	Sizes S-3XL	Safety orange
FTL6-LIM	Sizes S-3XL	Lime green

HRC 2 **ATPV**
11.7 cal/cm²

FTL6-GRY



FTL6-BLK



FTL6-NVY



FTL6-ORA



FTL6-LIM

66: Oil/Gas, Flash Fire Protection

NEW

NEW



7 oz. Tecasafe® Plus
Inherent FR

**NFPA 2112
Compliant**

Advanced
Moisture-Wicking

Superior Wear
and Tear

Excellent
Fit and Comfort

CT7B2NV

Sizes S-5XL

Tecasafe® plus flame resistant coveralls
Gusseted underarms and action back
Stitched with flame resistant aramid thread
Adjustable elastic inside waist
Pass-through pockets
Chest pockets and scribe pocket
Hip pockets
Two-way FR zipper
32" inseam

Arc rated: HRC 2, ATPV = 10.1 cal/cm²
ASTM 1506-08 and OSHA 29 CFR 1910.132

NFPA 2112 **NFPA 70E** **HRC 2** **ATPV 10.1 cal/cm²**



Industrial Size
Loops

PT7B2NV

Call for sizes

Tecasafe® plus flame resistant pants
Stitched with flame resistant aramid thread
Hip pockets
Belt loops
Two-way FR zipper
32" inseam

Arc rated: HRC 2, ATPV = 10.1 cal/cm²
ASTM 1506-08 and OSHA 29 CFR 1910.132

NFPA 2112 PENDING **NFPA 70E** **HRC 2** **ATPV 10.1 cal/cm²**

TENCATE

Tecasafe® plus



WT7B3NV

Sizes S-4XL

Tecasafe® plus flame resistant work shirt
Gusseted underarms and action back
Stitched with flame resistant aramid thread
Flame resistant melamine buttons
Long sleeves with button cuff
Moisture-wicking fabric profile

Arc rated: HRC 2, ATPV = 10.1 cal/cm²
ASTM 1506-08 and OSHA 29 CFR 1910.132

NFPA 2112 **NFPA 70E** **HRC 2** **ATPV 10.1 cal/cm²**



NEW

GX105

Sizes M-2XL

ToolHandz® performance series
Synthetic leather palm with Teflon® infused
reinforcements & PVC dots
Full coverage extreme finger guards and
internal cushioned impact layer
Reinforced index and thumb bridge
Snug spandex fit
Tested: ASTM F1790-05 (backside), ASTM
D3884-09, and ASTM D2632



NEW

ToolHandz®



Strap Cuff

Protective Guards with Cushioning Layer Inside

Synthetic Leather Palm

Unbelievable Flexibility

Tested for

- ASTM F1790-05 (Cut Resistance)
- ASTM D3884-09 (Abrasion Resistance)
- ASTM D2632 (Impact Resistance)

GX105

Sizes M-2XL

ToolHandz® performance series
 Synthetic leather palm with Teflon® infused reinforcements & PVC dots
 Full coverage extreme finger guards and internal cushioned impact layer
 Reinforced index and thumb bridge
 Snug spandex fit
 Tested: ASTM F1790-05 (backside), ASTM D3884-09, and ASTM D2632



98SB

Sizes M-2XL

ToolHandz® performance series
 Synthetic leather palm
 Protective finger guards
 Vibration-dampening palm
 Sure-grip reinforcements
 Snug spandex/neoprene fit



NEW

GX100

Sizes M-2XL

ToolHandz® performance series
 Synthetic leather palm
 Full coverage finger guards
 Vibration-dampening palm
 Padded BumpPatch™ side feature
 Reinforced index and thumb bridge
 Snug spandex fit

68: Hi-Vis Gloves

ToolHANDZ®



Hi-Vis Spandex Back

Strap Cuff

Generous Reflective Coverage

Premium Grain Pigskin Palm

Sure-grip Reinforcements

99HV

Sizes S-2XL

ToolHandz® performance series
Grain pigskin palm
Sure-grip reinforcements
Generous reflective coverage
Snug spandex fit



99HVA

Sizes S-2XL

ToolHandz® performance series
Synthetic leather palm
Sure-grip reinforcements
Generous reflective coverage
Snug spandex fit



98HV

Sizes S-2XL

FlexHand™ value series
Synthetic leather palm
Sure-grip reinforcements
Generous reflective coverage
Snug spandex fit



FO9-30C/BS/RTT



FO9-30C/BS



FL9-30C/GS

Hybrid™ Jackets

FR treated cotton with side split cowhide sleeves
Inside pocket and scribe pockets
Snap front and wrists

FO9-30C/BS/RTT Sizes S-4XL Silver on yellow FR reflective tape, 9 oz., orange

FO9-30C/BS Sizes S-4XL 9 oz., orange

FR treated cotton with side split cowhide sleeves
Inside pocket and scribe pockets
Snap front and wrists

FL9-30C/GS Sizes S-4XL 9 oz., lime green





FR Treated Cotton

Scribe Pocket



FTL6-LIM

FR Long-Sleeve T-Shirts

FR treated cotton
Scribe pocket
Long sleeves
Arc rated: HRC 2, ATPV: 11.7 cal/cm²

FTL6-LIM	Sizes S-3XL	Lime green
FTL6-ORA	Sizes S-3XL	Safety orange



FTL6-LIM/RTT	Sizes L-3XL	Hi-vis, silver on orange FR reflective tape, not arc rated
FTL6-ORA/RTT	Sizes L-3XL	Hi-vis, silver on yellow FR reflective tape, not arc rated



FTL6-ORA



FTL6-LIM/RTT



FTL6-ORA/RTT



FO9-30C



FO9-30C/RTT



FL9-30C



FL9-30C/RTT

FR Jackets

FR treated cotton
Inside pocket and scribe pockets
Snap front and wrists

FO9-30C	Sizes S-4XL	30" length, 9 oz., orange
FO9-30C/RTT	Sizes S-4XL	30" length, hi-vis, silver on yellow FR reflective tape, 9 oz., orange

FR treated cotton
Inside pocket and scribe pockets
Snap front and wrists

FL9-30C	Sizes S-4XL	30" length, 9 oz., lime green
FL9-30C/RTT	Sizes S-4XL	30" length, hi-vis, silver on orange FR reflective tape, 9 oz., lime green

70: Hi-Vis Safety Vests

NEW



SVY300

Sizes M-4XL

Standard mesh safety shirt
ANSI/ISEA 107-2010 Class 3 compliant
2" wide reflective tape all around
Zipper closure; 4 pockets total

POPULAR



SVY205

Sizes M-4XL

Standard mesh safety vest
ANSI/ISEA 107-2004 Class 2 compliant
2" wide reflective tape on front and back
Zipper closure and inside front pocket



SVY220

Sizes M-4XL

Surveyor's style mesh/polyester safety vest
ANSI/ISEA 107-2004 Class 2 compliant
Silver on orange reflective tape
Zipper closure
4 outside front pockets
2 inside front pockets



SVY110

Sizes L-4XL

Standard polyester safety vest
ANSI/ISEA 107-2004 Class 2 compliant
2" wide reflective tape on front and back
Zipper closure and 4 outside front pockets



SVO105

One size

Economy mesh safety vest
Reflective tape on front and back
Hook and loop closure



WL100HV

One size

Twill winter liner
Enhanced visibility
Heavy fleece lining
Pockets for heat packs



5B-LIM

Size L

Shoulder split cowhide with hi-vis fabric
Reflective knuckle strap on back
Palm lined
Rubberized short cuff



5B-ORA

Size L

Shoulder split cowhide with hi-vis fabric
Reflective knuckle strap on back
Palm lined
Rubberized short cuff



High Temperature Apparel :71

POPULAR



130AHS
248AHS

Jackets

Sizes S-4XL

19 oz. aluminized carbon/Kevlar®

150AHS/W 50" length, wool liner

148AHS 48" length

150AHS 50" length

130AHS 30" length

148AHS/W 48" length, wool liner

130AHS/W 30" length, wool liner

Chaps

One size

19 oz. aluminized carbon/Kevlar®

248AHS/R Chaps with rear leg coverage

248AHS Chaps



48AHS-SL

Split-Leg Aprons

One size

19 oz. aluminized carbon/Kevlar®

48AHS-SL 48" length

Leggings

One size

78AHS 19 oz. alum. carbon/Kevlar®
Spring clip supported
Hook and loop fastener
Double reinforced flare



78AHS

Spats

One size

25AHS 19 oz. aluminized carbon/Kevlar®

25CL Chrome-tanned leather



25AHS



65AHS
204AHS

Cape Sleeves

Sizes S-4XL

19 oz. alum. carbon/Kevlar®

65AHS 30" length

Bibs (not pictured)

One size

19 oz. alum. carbon/Kevlar®

AHS14B 14" length

AHS20B 20" length

Pants

Sizes S-4XL

204AHS 19 oz. alum. carbon/Kevlar®

Sleeves



AHS18



AHS23

One size

19 oz. alum. carbon/Kevlar®

AHS23 23" length
Adjustable shoulder straps

AHS18 18" length, Pull strap

Sock Hoods



PRH300



NH200

One size

PRH300 PBI® blend sock hood, front and back flap drapes

NH200 Nomex® knit, double layer w/single layer circular drape



42AHS

Bib Aprons

One size

19 oz. alum. carbon/Kevlar®

48AHS 48" length

36AR 17 oz. alum. rayon
36" length

42AHS 42" length

44AHS 44" length

30AHS 30" length

36AHS 36" length

40AL Alum. leather
40" length

Hoods



438AHS/GF

One size

19 oz. aluminized carbon/Kevlar® hood and welder's helmet

438AHS/GF Hood with clear Lexan® shield w/gold film

438AHS Hood with clear Lexan® shield

GF711 Gold film replacement

LW711 Clear Lexan® replacement window



100AHS/G

One size

19 oz. aluminized carbon/Kevlar® hood

100AHS/G Hood with clear polycarbonate w/gold shield

100AHS Hood with clear polycarbonate shield

72: High Temperature Gloves

POPULAR



DK114

One size

22 oz. Kevlar®
14" length
Fully sock lined with wool

DK123 23" length
DK118 18" length



TK114

One size

14" length terry Kevlar®
Fully sock lined with wool



HP114

One size

45 oz. PBI®
14" length
Fully sock lined with wool



AHS714L

One size

19 oz. alum. carbon/Kevlar® back
Cowhide leather palm
14" length
Fully sock lined with wool



P114

One size

22 oz. PBI® version of HP114



AHS714P

One size

19 oz. alum. carbon/Kevlar® back
PBI® palm
14" length
Fully sock lined with wool

AHS714DK Kevlar® palm
AHS718DK Kevlar® palm,
18" length



AHS114

One size

19 oz. alum. carbon/Kevlar® back and palm
14" length
Fully sock lined with wool



DK614L

One size

22 oz. Kevlar®
Double palm with leather
14" length
Fully sock lined with wool



G114

One size

36 oz. fiberglass
14" length
Fully sock lined with wool

V114 Vertex™ version



AL718L

One size

Alum. leather back, palm and thumb
18" length
Fully sock lined with wool



KT-12M

One size

24 oz. terry Kevlar® mitt
14" length
Fully sock lined with wool and cotton duck
D-ring hang strap
Sold individually



DK214

One size

22 oz. Kevlar® mitt
14" length
Fully sock lined with wool and Nomex® felt

DK214DK Double Kevlar® palm
DK218 18" length



XHG214

One size

70 oz. exothermic heavy fiberglass mitt
14" length
Fully sock lined with wool and Nomex® felt



V214

One size

36 oz. Vertex™ mitt
14" length
Fully sock lined with wool and Nomex® felt

V223 23" length
V214V Double Vertex™ palm



PC1R

One size

22 oz. PBI® jumbo cover mitt
Unlined

WVC1R 36 oz. Vertex™, wire mesh shell
VC1R 36 oz. Vertex™
BK107GC 14 oz. ballistic Kevlar®,
exposed fingertips
TVC1R 36 oz. Vertex™, inconel mesh shell
DKC1R 22 oz. Kevlar®

Glove and Mitt Materials



Kevlar® (DK)



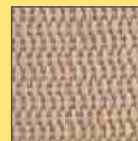
PBI® (P)



Terry Kevlar® (TK)



Fiberglass (G)



Heavy Fiberglass
(XHG)



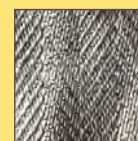
Aluminized
Leather (AL)



Vermiculite Coated
Fiberglass (V)

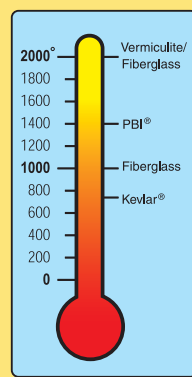
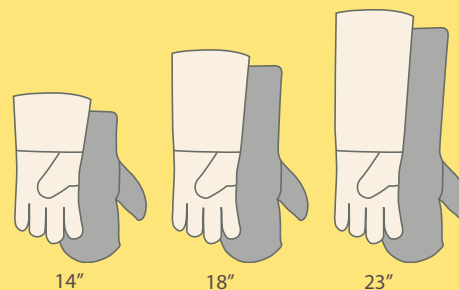


Heavy PBI® (HP)



Aluminized
Carbon/Kevlar®
(AHS)

Glove and Mitt Lengths



Glove and Mitt
General Material
Deterioration Temperatures
CAUTION - NOT WORKING
TEMPERATURES*

BID ORDERS

Please call regarding bid orders.
Fast quotations and turn around
with manufacturing in Santa Fe
Springs (Los Angeles), CA.

CUSTOM ORDERS

Custom items are available by
request. Specific minimums and
conditions apply. Please contact
Revco Industries for more details.

NON-RETURNABLE

All high-temperature items are
considered custom items and are
non-returnable.

Caution The thermometer is meant to illustrate the relative deterioration temperatures of the different materials and should not be construed as a guide for working temperatures. Any melting temperatures stated in the product descriptions, should also not be construed as working temperatures. See the disclaimer below.

Disclaimer We believe the information in the High Temperature category is accurate at the time of printing. Many factors must be considered when determining the proper level of protection. It is the sole responsibility of the user to determine if the product is appropriate for the intended use and complies with all health and safety regulations. Revco makes no guarantees, representations, or warranties in respect of these products, including, but not limited to, warranties of merchantability, and or warranties of fitness for any purpose. Revco shall not be liable for any loss, injury or death or any direct or indirect damages arising out of the use of these products.






74: Welding Screens & Frames

Saf-Vu™ Welding Screens and Curtains Only

Vinyls are flame resistant and meet the requirements of California Fire Marshall (CFM).




14 mil. Translucent Vinyl

- Provides protection from harmful UV rays and sparks
- Blocks most UV radiation
- Enables limited observability by passerby's

Standard Sizes					
	14 mil. Orange	14 mil. Blue	14 mil. Yellow	14 mil. Shade 8	14 mil. Green
6X6	64-3186	64-3156	64-3196	64-3176	64-3166
6X8	64-3188	64-3158	64-3198	64-3178	64-3168
6X10	64-3180	64-3150	64-3190	64-3170	64-3160

13 mil. Opaque Vinyl Coated Polyester

- Opaque for maximum eyesight protection
- Coated polyester is more resistant against puncture and abrasion than plain vinyl

Standard Sizes			
	13 mil. Blue	13 mil. Yellow	13 mil. Green
6X6	64-3106	64-3126	64-3116
6X8	64-3108	64-3128	64-3118
6X10	64-3100	64-3120	64-3110


12 oz. Opaque Canvas Duck

- Opaque for maximum eyesight protection
- Flame, water, and mildew resistant
- Meets the requirements of CPAI-84

Standard Sizes	
	12 oz. Olive Drab
6X6	64-4166
6X8	64-4168
6X10	64-4160


40 mil. Translucent Vinyl

- Heavy duty vinyl for high abrasion applications

Standard Sizes	
	40 mil Orange
6X6	64-3146
6X8	64-3148
6X10	64-3140

16 mil. Clear Vinyl

- Ideal as a barrier for chipping and grinding applications
- Not for eyesight protection

Standard Sizes	
	16 mil. Clear
6X6	64-3136
6X8	64-3138
6X10	64-3130

Welding Curtain Roll Goods

Description	Color	Item #	Width	Appx. Yds./Roll
14 mil. FR Translucent Vinyl	Orange, Blue, Yellow, Shade 8, Green	64-1006	74"	62 yd.
12 oz. FR Olive Drab Canvas Duck	Olive Drab	64-2005	72"	100 yd.
16 mil. FR Clear Vinyl	Clear	64-1007	54"	72 yd.
40 mil. FR Translucent Vinyl	Orange	64-1008	48"	50 yd.
13 mil. FR Vinyl Coated Polyester	Blue, Yellow, Green	64-1010	61"	100 yd.



QuickFrame[®] HEAVY DUTY

Heavy Duty Welding Screens and Frames

- Heavy duty black powder coated 1" diameter square tube framing
- Weightier system for added footing stability
- Snap-fit design for quick and easy assembly without tools
- Sturdy platform legs included and easily removable for storage
- Smaller packaging for convenient shipping and display
- Double-hinged connector system provides a greater variety of multi-panel configurations, including close-flat for storage



Standard Sizes	FR Translucent Vinyl					FR Canvas	
	14 mil. Orange	14 mil. Blue	14 mil. Yellow	14 mil. Shade 8	14 mil. Green	12 oz. Olive Drab	Frame Only
6X6	64-5186SQ	64-5156SQ	64-5196SQ	64-5176SQ	64-5166SQ	64-6166SQ	64-7166SQ
6X8	64-5188SQ	64-5158SQ	64-5198SQ	64-5178SQ	64-5168SQ	64-6168SQ	64-7168SQ

QuickFrame[®] STANDARD

Standard Welding Screens and Frames

- Durable black powder coated 1" diameter round tube framing
- Less weighty design for more convenient mobility
- Snap-fit design for quick and easy assembly without tools
- Sturdy platform legs included and easily removable for storage
- Smaller packaging for convenient shipping and display

NEW

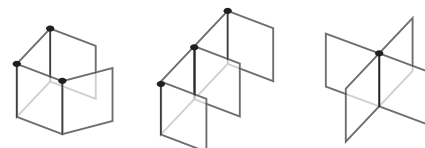


Standard Sizes	FR Translucent Vinyl					FR Canvas
	14 mil. Orange	14 mil. Blue	14 mil. Yellow	14 mil. Shade 8	14 mil. Green	12 oz. Olive Drab
6X6	64-5186	64-5156	64-5196	64-5176	64-5166	64-6166
6X8	64-5188	64-5158	64-5198	64-5178	64-5168	64-6168
6X10	64-5180	64-5150	64-5190	64-5170	64-5160	64-6160

Standard Sizes	FR Translucent Vinyl	FR Vinyl Coated Polyester				Frame Only
	16 mil. Clear	40 mil. Orange	13 mil. Blue	13 mil. Yellow	13 mil. Green	
6X6	64-5136	64-5146	64-5106	64-5126	64-5116	64-7166
6X8	64-5138	64-5148	64-5108	64-5128	64-5118	64-7168

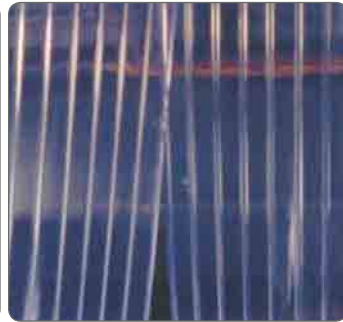
Accessories

QuickFrame [®] HEAVY DUTY Action Hinge	QuickFrame [®] STANDARD Hinge Clip	Casters	Brass Grommets	Curtain Hooks	Nylon Ties
SF-AH	CR	CS	GR	HK	TIE



Multi-Panel Screens and Frames Available
Please call regarding possible configurations

76: Strip Curtains



Welding Strip Curtain Information

Verilon® strip curtains block over 99% of UV radiation (200–400 nm) and is suitable for welding, spraying, grinding, and sand blasting enclosures. The curtains are flame resistant, highly transparent, and noise deadening, while preventing dangerous near-UV and UV radiation from penetrating to adjacent areas. Meets CPAI-84 and California Fire Marshall requirements for flame resistance.

Strip Curtains – Full Set (hardware sold separately)

- Recommended thicknesses for various applications:
 - 8" wide/.08" thickness for internal use for freezers, refrigerator trucks, coolers, and personnel doors.
 - 12" wide/.12" thickness for internal or external use for protection against severe temperature and windy conditions.
- Determine the value you need for each spec and enter the corresponding code in the box below each column.
- The resulting string of numbers and letters is your item number.
- The example below reads S-ORA8F-10x8, which is a 10' high by 8' wide orange color curtain with fully overlapping 8" wide/.08" thickness strips.
- Hardware sold separately. See Hardware Item Numbers.

Color	Available Strip Widths	Code
Clear	8" or 12"	CLR
Blue	8"	BLU
Bronze	12"	BRZ
Orange	8"	ORA

Strip Width/Thickness	Code
8"/.08"	8
12"/.12"	12

Suggested widths: If opening 10 ft. high, choose 8" strips; 9 to 14 ft., choose 12" strips. See section to the left for width availability for different colors.

Overlap	Code
Full	F
Partial	P

Full 100% total overlap; Partial 50% total overlap for 8" width, 66% total overlap for 12" width

Opening Size	Code
Height x Width (feet)	H x W

S - example **ORA**

example **8**

example **F**

- example **10x8**

Replacement Strips and Roll Goods

- Determine the value you need for each spec and enter the corresponding code in the box below each column.
- The resulting string of numbers and letters is your item number.
- The example below reads S-ORA8-S, which is an orange color 8" wide/.08" thick replacement strip.
- Hardware sold separately. See Hardware Item Numbers.

Color	Available Strip Widths	Code
Clear	8" or 12"	CLR
Blue	8"	BLU
Bronze	12"	BRZ
Orange	8"	ORA

Strip Width/Thickness	Code
8"/.08"	8
12"/.12"	12

See section to the left for width availability for different colors.

Strip or Roll	Code
Strip	S
Roll*	R

*Roll goods come in 300 ft. rolls for 8" width and 200ft. rolls for 12" width.

S - example **ORA**





example **8**

- example **S**

Hardware Item Numbers

- 3 feet length.....item# 64-9083
- 4 feet length.....item# 64-9084
- 5 feet length.....item# 64-9085



Item #	Weight	Color/Description	Melt Temp.	Thickness	Usage Guidelines	Roll Width	Blanket Sizes
Extra Heavy Duty - Applications with heavy spatter, slag, and molten metal possibility							
 B-SLC36	36 oz.	Tan Silica FM Approved	3000° F	.050"	Sparks, Heavy Spatter, Molten Metal	36"	6' x 6' 6' x 8' Custom
Heavy Duty - Applications with heavy sparks, spatter, and slag							
 POPULAR B-VCF25	25 oz.	Black Vermiculite Coated Fiberglass FM Approved	1200° F	.054"	Sparks, Spatter, Slag	60"	6' x 6' 6' x 8' 8' x 8' 10' x 10' Custom
 B-SLC18	18 oz.	Tan Silica FM Approved	3000° F	.030"	Sparks, Spatter, Molten Metal	36"	6' x 6' 6' x 8' 9' x 10' Custom
 POPULAR B-CBN16	16 oz.	Black Carbon Fiber Felt	1800° F	.170"	Sparks, Spatter, Slag, Auto Industry Applications degradation point'	72"	6' x 6' 6' x 8' Custom



78: Welding Blankets

Item #	Weight	Color/Description	Melt Temp.	Thickness	Usage Guidelines	Roll Width	Blanket Sizes
Medium Duty - Heavier welding applications with sparks, spatter, and light slag							
POPULAR B-WFG24	24 oz.	Heat Cleaned Tan FM Approved	1000° F	.050"	Sparks, Spatter	40" 60"	5' x 6' 6' x 6' 6' x 8' 10' x 10' Custom
B-WFG35	35 oz.	Heat Cleaned Tan FM Approved	1000° F	.080"	Sparks, Spatter, Good for Stress Relief	60"	6' x 6' 6' x 8' 10' x 10' Custom
B-OfG32	32 oz.	Orange Fiberglass FM Approved	1000° F	.070"	Sparks, Spatter	60"	6' x 8' Custom
POPULAR B-NFG24*	24 oz.	Gold Acrylic Coated Fiberglass FM Approved	1000° F	.039"	Sparks, Spatter, Abrasion Resistance	40" 60"	6' x 6' 6' x 8' 8' x 8' 8' x 10' 10' x 10' Custom
POPULAR B-NFG30*	30 oz.	Gold Acrylic Coated Fiberglass FM Approved	1000° F	.053"	Sparks, Spatter, Abrasion Resistance	40" 60"	3' x 3' 6' x 6' 6' x 8' 8' x 10' 10' x 10' Custom
B-RFG32*	32 oz.	Rust Silicone Coated Fiberglass FM Approved	1000° F	.035"	Sparks, Spatter, Abrasion Resistance	60"	Custom
B-HCL40*	3-3.5 oz.	Pearl Side Split Leather Heat Shield	N/A	N/A	Sparks, Spatter, Excellent Flexibility, Superior Abrasion Resistance, Good for Auto Body Work	N/A	6' x 3' 6' x 6' Custom

*Not recommended for stress relief applications



Caution

Temperature and other information for blankets are intended to be used as guidelines only. Since applications and conditions vary widely, and are beyond Revco's control, blanket performance is not guaranteed. It is the buyer's and, ultimately, the end-user's responsibility to determine whether the product will provide adequate protection.

Item #	Weight	Color/Description	Melt Temp.	Thickness	Usage Guidelines	Roll Width	Blanket Sizes
Light Duty - Welding applications with light sparks and spatter							
 B-WFG18	18 oz.	Heat Cleaned Tan FM Approved	1000° F	.033"	Sparks, Vertical Plane Protection Only	40" 60"	6' x 6' 6' x 8' 10' x 10' Custom
B-SNF16	16 oz.	Salmon Acrylic Coated Fiberglass FM Approved	1000° F	.016"	Sparks, Good Abrasion Resistance, Vertical Plane Protection Only	60"	Custom

Product Information

Material Weight

Material weight is measured in ounces per square yard. Thickness is measured in inches. All factors held constant, thicker material will provide longer protection than a thinner piece of the same material. Therefore, the thickest materials may be used on a flat surface while the thinnest selections should only be used on a vertical plane such that hot objects fall off after only brief contact.

Coated Materials

Coated materials may resist abrasion better. Smoother coatings such as silicone tend to allow sparks to roll off more easily on a vertical plane. Coated materials may also reduce fiberglass skin irritation.

Stress Relief

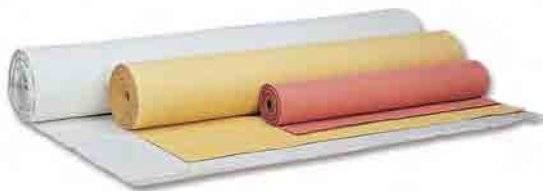
For stress relief, choose uncoated materials because coatings may smolder after prolonged contact with extremely hot objects. Heavier selections of fiberglass, vermiculite impregnated fiberglass, and silica materials are suitable for stress relief applications.

Finished Blankets

Finished blankets may vary up to 3 inches in height and width. Grommets come standard along all sides at approximately every 36 inches except carbon fiber felt blankets which are not grommeted. Finished blankets come packaged for display.

Roll goods

Roll goods come in full 50 linear yard rolls, ± 5 linear yards (a linear yard (lyd.) is defined by the roll's width multiplied by the length of one yard). Please call if you have multiple roll requirements. Roll good shipping is excluded from prepaid freight arrangements.



What are FM Approvals?

Our welding blankets have been FM approved, where marked as such. The standard requires approved styles of welding blankets to resist flame propagation and burn through, and exhibit temperature transmission limitation properties.

80: Made in U.S.A.



DK114

One size

22 oz. Kevlar®
14" length
Fully sock lined with wool



V214

One size

36 oz. Vertex™ mitt
14" length
Fully sock lined with wool and Nomex® felt



XHG214

One size

70 oz. exothermic heavy fiberglass mitt
14" length
Fully sock lined with wool and Nomex® felt



101A

Sizes S-XL

Premium side split cowhide
16" length
Acrylic lining
Kevlar® stitched



B-CBN16

One size

1' X 1' black plumber's blanket
16 oz. pre-oxidized carbon fiber felt



Made in U.S.A.

It's still possible at Revco. We have decades of manufacturing expertise in our U.S.A. factory to hand-craft the products on this page, and many more.





PRH300

One size

PBI® blend knit balaclava sock hood
Single layer
Front and back flap drapes



NH200

One size

Nomex® knit balaclava sock hood
Double layer
Single layer circular drape



BP-CB

One size

Pre-oxidized carbon fiber backpack
Sold individually



BP-DX

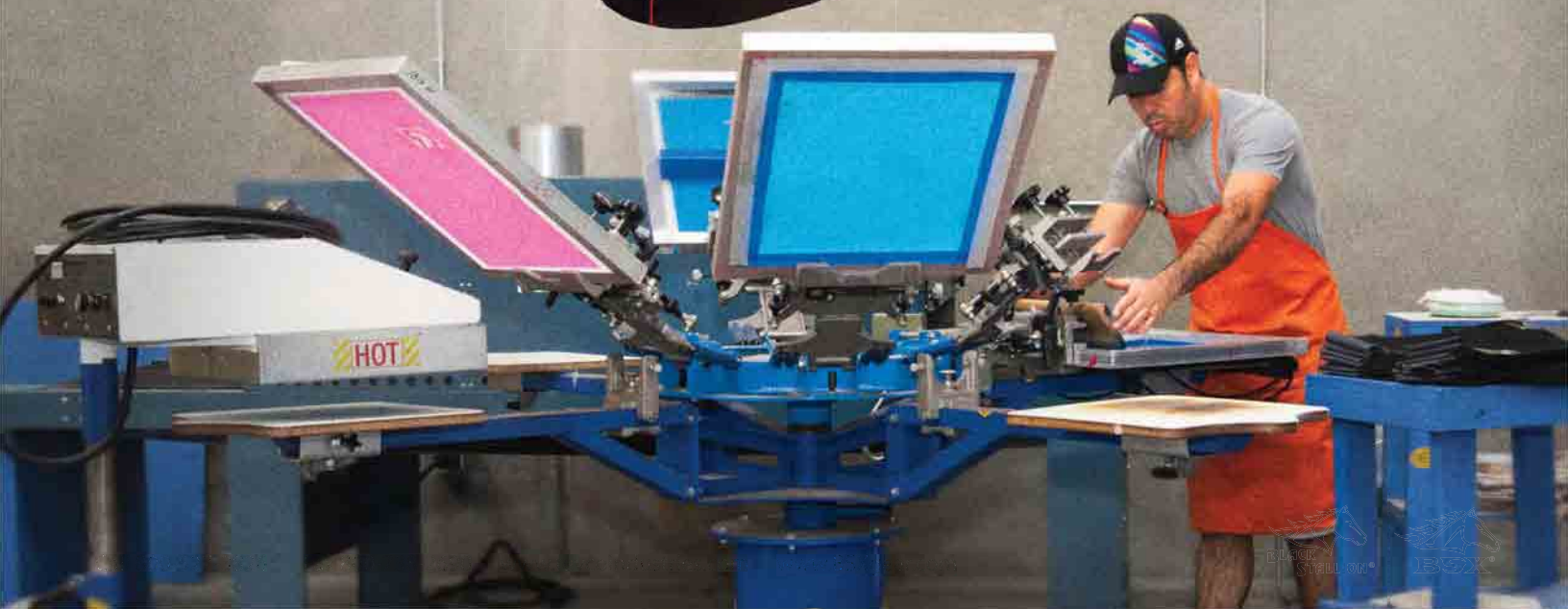
One size

1/2" heavy duty fiberglass insulated backpack
Double layer construction
Sold individually



Custom Imprinting

Revco takes advantage of in-house screen printing for faster turnaround and sharper logos so you can bid for business with confidence.



82: Distributor Support



Please Be Advised

With decades of providing, designing, and advising on PPE to customers around the country, why not pick our brains for the expertise that will help you choose the most applicable and effective product mix for your region and end-user applications? Give us a call today!

NEW

66-1045

Product Showcase Signs

Focus attention on core and innovative, new Black Stallion® and BSX® products. This set of two vertical and one horizontal rigid sign fits on virtually all merchandising hooks. Order extras for wider or taller displays. Set includes one horizontal sign at 56"W x 8"H and two vertical signs at 6"W x 44"H (each).

POPULAR



66-1036

BSX® & Black Stallion® Banner

Full color vinyl banner with grommets.
Approximately 4'W x 2'H

NEW



66-1004

BSX® & Black Stallion® Sign

Full color rigid sign with hanging holes.
Approximately 44"W x 8"H

Important Information

Actual merchandising units may vary from the pictures shown. Products pictured on merchandising units are for illustration purposes only and are not included unless in specified package. Some assembly required for most units.



64-9111

Mobile Floor Display

12 hooks for gloves (up to 8 pairs per hook). Fully adjustable row height. Optional dual garment arms and catch basket included. Approximately 25"W x 14"D x 58"H or 40"W x 14"D x 66"H with arms and sign. (For BSX® displays, please call for information about the BSX® Starter Display Program)



Front

NEW



Back

64-9115

Double-Sided Mobile Floor Display

Fully adjustable rows and hooks for gloves and accessories on one side. Garment rack and space for accessories at top on the other side. Convenient catch-all baskets at bottom. Sturdy casters and easy assembly. Take advantage of our expertise. Product suggestions available. Approximately 34"W x 32"D x 74"H (with sign).

POPULAR



66-1001

Display Bin

Boost sales by filling bins with Black Stallion® gloves (good, better, best) and placing them along the register counter for fast-selling exposure. Approximately 18"W x 18"D x 29"H



66-1022

Countertop Spinner Display

Up to 48 pairs on double tier (not for welding gloves). Approximately 14"W x 9"D x 31"H



66-1003SQ

Sample QuickFrame™ Display

Approximately 24"W x 38"H



Packaging

Most gloves and garments ship with bar coded hang tags and display hooks, where applicable, for easy display.

66-1003S Sample Screen



Revco Industries, Inc.
10747 Norwalk Blvd.
Santa Fe Springs, CA 90670

Call 800-527-3826

562-777-1588

Fax 800-738-2690

www.BlackStallion.com

www.BSXgear.com